

# GAMMA PRODOTTI STANDARD

## INSERTI FILETTATI **APERTI** ACCIAIO ZINCATO



### TESTA CILINDRICA CORPO ZIGRINATO

STEEL BLIND RIVET NUTS CYLINDRICAL HEAD BODY  
ECROUS A SERTIR ACIER TÊTE CYLINDRIQUE  
ВСТАВКИ С РЕЗЬБОЙ ИЗ СТАЛИ С ЦИЛИНДРИЧЕСКОЙ ГОЛОВКОЙ



### TESTA CILINDRICA CORPO LISCIO

STEEL BLIND RIVET NUTS CYLINDRICAL HEAD BODY  
ECROUS A SERTIR EN ACIER TÊTE CYLINDRIQUE  
ВСТАВКИ С РЕЗЬБОЙ ИЗ СТАЛИ С ЦИЛИНДРИЧЕСКОЙ ГОЛОВКОЙ



### TESTA RIDOTTA CORPO ZIGRINATO

STEEL BLIND RIVET NUTS REDUCED HEAD BODY  
ECROUS A SERTIR EN ACIER TÊTE RÈDUITE  
ВСТАВКИ С РЕЗЬБОЙ ИЗ СТАЛИ С СУЖЕННОЙ ГОЛОВКОЙ



### TESTA RIDOTTA CORPO LISCIO

STEEL BLIND RIVET NUTS REDUCED HEAD BODY  
ECROUS A SERTIR EN ACIER TÊTE RÈDUITE  
ВСТАВКИ С РЕЗЬБОЙ ИЗ СТАЛИ С СУЖЕННОЙ ГОЛОВКОЙ



### TESTA SVASATA CORPO ZIGRINATO

STEEL BLIND RIVET NUTS COUNTERSUNK HEAD BODY  
ECROUS A SERTIR EN ACIER TÊTE FRAISÉE  
ВСТАВКИ С РЕЗЬБОЙ ИЗ СТАЛИ С РАСКЛЕШЕННОЙ ГОЛОВКОЙ



### TESTA CILINDRICA CORPO ESAGONALE

STEEL BLIND RIVET NUTS CYLINDRICAL HEAD HEXAGONAL SHANK  
ECROUS A SERTIR EN ACIER TÊTE CYLINDRIQUE QUEUE HEXAGONALE  
ВСТАВКИ С РЕЗЬБОЙ ИЗ СТАЛИ С ЦИЛИНДРИЧЕСКОЙ ГОЛОВКОЙ И ШЕСТИУГОЛЬНЫМ СТЕРЖНЕМ



### TESTA CILINDRICA CORPO SEMI-ESAGONALE

STEEL BLIND RIVET NUTS CYLINDRICAL HEAD-HALF HEXAGONAL SHANK  
ECROUS A SERTIR EN ACIER TÊTE CYLINDRIQUE QUEUE EN PARTIE HEXAGONALE  
ВСТАВКИ С РЕЗЬБОЙ ИЗ СТАЛИ С ЦИЛИНДРИЧЕСКОЙ ГОЛОВКОЙ И НЕ ПОЛНОСТЬЮ ШЕСТИУГОЛЬНЫМ СТЕРЖНЕМ



### TESTA RIDOTTA TUTTO ESAGONO

STEEL BLIND RIVET NUTS REDUCED HEAD HEXAGONAL SHANK  
ECROUS A SERTIR EN ACIER TÊTE RÈDUITE QUEUE HEXAGONALE  
ВСТАВКИ С РЕЗЬБОЙ ИЗ СТАЛИ С СУЖЕННОЙ ГОЛОВКОЙ И ШЕСТИУГОЛЬНЫМ СТЕРЖНЕМ



### TESTA RIDOTTA CORPO SEMI-ESAGONALE

STEEL BLIND RIVET NUTS REDUCED HEAD-HALF HEXAGONAL SHANK  
ECROUS A SERTIR EN ACIER TÊTE RÈDUITE QUEUE EN PARTIE HEXAGONALE  
ВСТАВКИ С РЕЗЬБОЙ ИЗ СТАЛИ С СУЖЕННОЙ ГОЛОВКОЙ И НЕ ПОЛНОСТЬЮ ШЕСТИУГОЛЬНЫМ СТЕРЖНЕМ

## GAMMA PRODOTTI STANDARD

### INSERTI FILETTATI **CIECHI** ACCIAIO ZINCATO



#### TESTA CILINDRICA CORPO ZIGRINATO CIECO

STEEL BLIND RIVET NUTS CYLINDRICAL HEAD-CLOSED END BODY  
ECROUS A SERTIR AVEUGLES EN ACIER TÊTE CYLINDRIQUE  
ГЛУХИЕ ВСТАВКИ С РЕЗЬБОЙ ИЗ СТАЛИ С ЦИЛИНДРИЧЕСКОЙ ГОЛОВКОЙ



#### TESTA CILINDRICA CORPO ESAGONALE CIECO

STEEL BLIND RIVET NUTS CYLINDRICAL HEAD HEXAGONAL SHANK- CLOSED END TYPE  
ECROUS A SERTIR AVEUGLES EN ACIER TÊTE CYLINDRIQUE QUEUE HEXAGONALE  
ГЛУХИЕ ВСТАВКИ С РЕЗЬБОЙ ИЗ СТАЛИ С ЦИЛИНДРИЧЕСКОЙ ГОЛОВКОЙ И ШЕСТИУГОЛЬНЫМ СТЕРЖНЕМ



#### TESTA RIDOTTA CORPO ZIGRINATO CIECO

STEEL BLIND RIVET NUTS REDUCED HEAD - CLOSED END TYPE  
ECROUS A SERTIR AVEUGLES EN ACIER TÊTE RÈDUITE  
ГЛУХАЯ ВСТАВКИ С РЕЗЬБОЙ ИЗ СТАЛИ С СУЖЕННОЙ ГОЛОВКОЙ



#### TESTA RIDOTTA CORPO ESAGONALE CIECO

STEEL BLIND RIVET NUTS REDUCED HEAD HEXAGONAL SHANK- CLOSED END TYPE  
ECROUS A SERTIR AVEUGLES EN ACIER TÊTE RÈDUITE QUEUE HEXAGONALE  
ГЛУХИЕ ВСТАВКИ С РЕЗЬБОЙ ИЗ СТАЛИ С СУЖЕННОЙ ГОЛОВКОЙ И ШЕСТИУГОЛЬНЫМ СТЕРЖНЕМ

### INSERTI FILETTATI IN **POLLICI** ACCIAIO ZINCATO



#### TESTA RIDOTTA CORPO LISCIO

STEEL BLIND RIVET NUTS REDUCED HEAD ROUND BODY  
ECROUS A SERTIR EN ACIER TÊTE REDUITE QUEUE ROND  
ВСТАВКИ С РЕЗЬБОЙ ИЗ СТАЛИ С УЖЕННОЙ ГОЛОВКОЙ КРУГЛЫЙ



#### TESTA RIDOTTA CORPO ZIGRINATO

STEEL BLIND RIVET NUTS REDUCED HEAD ROUND BODY  
ECROUS A SERTIR EN ACIER TÊTE REDUITE QUEUE ROND  
ВСТАВКИ С РЕЗЬБОЙ ИЗ СТАЛИ С УЖЕННОЙ ГОЛОВКОЙ КРУГЛЫЙ



#### TESTA RIDOTTA CORPO SEMI-ESAGONALE

STEEL BLIND RIVET NUTS REDUCED HEAD-HALF HEXAGONAL SHANK IMPERIAL UK  
ECROUS A SERTIR EN ACIER TÊTE RÈDUITE QUEUE EN PARTIE HEXAGONALE IMPÈRIAL UK  
ВСТАВКИ С РЕЗЬБОЙ ИЗ СТАЛИ С СУЖЕННОЙ ГОЛОВКОЙ И НЕ ПОЛНОСТЬЮ ШЕСТИУГОЛЬНЫМ СТЕРЖНЕМ UK

### INSERTI FILETTATI **MASCHI**



#### INSERTO TONDO MASCHIO IN ACCIAIO ZINCATO

STEEL BLIND RIVET BOLTS  
GOUJONS A SERTIR EN ACIER  
СТАЛЬНЫЕ ВСТАВКИ МЕТЧИКИ



#### INSERTO ESAGONALE MASCHIO

STEEL BLIND RIVET BOLTS- HEXAGONAL SHANK  
GOUJONS A SERTIR EN ACIER QUEUE HEXAGONALE  
СТАЛЬНЫЕ ВСТАВКИ МЕТЧИКИ С ШЕСТИУГОЛЬНЫМ СТЕРЖНЕМ

# GAMMA PRODOTTI STANDARD

## INSERTI FILETTATI **APERTI** ACCIAIO INOX AISI 304 (A2)



### TESTA RIDOTTA CORPO ZIGRINATO

STAINLESS STEEL (A2) BLIND RIVET NUTS REDUCED HEAD BODY  
ECROUS A SERTIR EN ACIER INOXYDABLE (A2) TÊTE RÈDUITE  
ВСТАВКИ С РЕЗЬБОЙ С СУЖЕНОЙ ГОЛОВКОЙ ИЗ НЕРЖАВЕЮЩЕЙ СТАЛИ (A2)



### TESTA SVASATA CORPO ZIGRINATO

STAINLESS STEEL (A2) BLIND RIVET NUTS COUNTERSUNK HEAD BODY  
ECROUS A SERTIR EN ACIER INOXYDABLE (A2) TÊTE FRAISÉE  
ВСТАВКИ С РЕЗЬБОЙ С РАСКЛЕШЕННОЙ ГОЛОВКОЙ ИЗ НЕРЖАВЕЮЩЕЙ СТАЛИ (A2)



### TESTA CILINDRICA CORPO ZIGRINATO

STAINLESS STEEL (A2) BLIND RIVET NUTS CYLINDRICAL HEAD  
ECROUS A SERTIR EN ACIER INOXYDABLE (A2) TÊTE CYLINDRIQUE  
ВСТАВКИ С РЕЗЬБОЙ С ЦИЛИНДРИЧЕСКОЙ ГОЛОВКОЙ ИЗ НЕРЖАВЕЮЩЕЙ СТАЛИ (A2)



### TESTA CILINDRICA RIDOTTA CORPO SEMI-ESAGONALE

STAINLESS STEEL (A2) BLIND RIVET NUTS REDUCED HEAD-HALF HEXAGONAL SHANK  
ECROUS A SERTIR EN ACIER INOXYDABLE (A2) TÊTE RÈDUITE QUEUE EN PARTIE HEXAGONALE  
ВСТАВКИ С РЕЗЬБОЙ С СУЖЕННОЙ ГОЛОВКОЙ И НЕ ПОЛНОСТЬЮ ШЕСТИУГОЛЬНЫМ СТЕРЖНЕМ ИЗ НЕРЖАВЕЮЩЕЙ СТАЛИ (A2)



### TESTA CILINDRICA CORPO SEMI-ESAGONALE

STAINLESS STEEL (A2) BLIND RIVET NUTS CYLINDRICAL HEAD-HALF HEXAGONAL SHANK  
ECROUS A SERTIR EN ACIER INOXYDABLE (A2) TÊTE CYLINDRIQUE QUEUE EN PARTIE HEXAGONALE  
ВСТАВКИ С РЕЗЬБОЙ С ЦИЛИНДРИЧЕСКОЙ ГОЛОВКОЙ И НЕ ПОЛНОСТЬЮ ШЕСТИУГОЛЬНЫМ СТЕРЖНЕМ ИЗ НЕРЖАВЕЮЩЕЙ СТАЛИ (A2)

## INSERTI FILETTATI **CIECHI** ACCIAIO INOX AISI 304 (A2)



### TESTA RIDOTTA CORPO ZIGRINATO CIECO

STAINLESS STEEL (A2) BLIND RIVET NUTS REDUCED HEAD - CLOSED END TYPE  
ECROUS A SERTIR AVEUGLES EN ACIER INOXYDABLE (A2) TÊTE RÈDUITE  
ГЛУХАЯ ВСТАВКИ С РЕЗЬБОЙ С СУЖЕННОЙ ГОЛОВКОЙ ИЗ НЕРЖАВЕЮЩЕЙ СТАЛИ (A2)



### TESTA CILINDRICA CORPO ZIGRINATO CIECO

STAINLESS STEEL (A2) BLIND RIVET NUTS CYLINDRICAL HEAD-CLOSED END BODY  
ECROUS A SERTIR AVEUGLES EN ACIER INOXYDABLE (A2) TÊTE CYLINDRIQUE  
ГЛУХИЕ ВСТАВКИ С РЕЗЬБОЙ С ЦИЛИНДРИЧЕСКОЙ ГОЛОВКОЙ ИЗ НЕРЖАВЕЮЩЕЙ СТАЛИ (A2)



### TESTA ESAGONALE RIDOTTA CORPO SEMI-ESAGONALE CIECO

STAINLESS STEEL (A2) BLIND RIVET NUTS REDUCED HEAD-HALF HEXAGONAL SHANK - CLOSED END TYPE  
ECROUS A SERTIR EN ACIER INOXYDABLE (A2) TÊTE RÈDUITE QUEUE EN PARTIE HEXAGONALE  
ГЛУХАЯ ВСТАВКИ С РЕЗЬБОЙ С СУЖЕННОЙ ГОЛОВКОЙ И НЕ ПОЛНОСТЬЮ ШЕСТИУГОЛЬНЫМ СТЕРЖНЕМ ИЗ НЕРЖАВЕЮЩЕЙ СТАЛИ (A2)



### TESTA CILINDRICA CORPO SEMI-ESAGONALE CIECO

STAINLESS STEEL (A2) BLIND RIVET NUTS CYLINDRICAL HEAD-HALF HEXAGONAL SHANK - CLOSED END TYPE  
ECROUS A SERTIR EN ACIER INOXYDABLE (A2) TÊTE CYLINDRIQUE QUEUE EN PARTIE HEXAGONALE  
ГЛУХАЯ ВСТАВКИ С РЕЗЬБОЙ С ЦИЛИНДРИЧЕСКОЙ ГОЛОВКОЙ И НЕ ПОЛНОСТЬЮ ШЕСТИУГОЛЬНЫМ СТЕРЖНЕМ ИЗ НЕРЖАВЕЮЩЕЙ СТАЛИ (A2)

# GAMMA PRODOTTI STANDARD

## INSERTI FILETTATI ACCIAIO INOX AISI 316 (A4)



### TESTA RIDOTTA CORPO ZIGRINATO

STAINLESS STEEL AISI 316 BLIND RIVET NUTS REDUCED HEAD BODY  
ECROUS A SERTIR EN ACIER INOXYDABLE AISI 316 TÊTE RÈDUITE  
ВСТАВКИ С РЕЗЬБОЙ С СУЖЕННОЙ ГОЛОВКОЙ ИЗ НЕРЖАВЕЮЩЕЙ СТАЛИ AISI 316



### TESTA CILINDRICA RIDOTTA CORPO SEMI-ESAGONALE

STAINLESS STEEL AISI 316 BLIND RIVET NUTS REDUCED HEAD-HALF HEXAGONAL SHANK  
ECROUS A SERTIR EN ACIER INOXYDABLE AISI 316 TÊTE RÈDUITE QUEUE EN PARTIE HEXAGONALE  
ВСТАВКИ С РЕЗЬБОЙ С СУЖЕННОЙ ГОЛОВКОЙ И НЕ ПОЛНОСТЬЮ ШЕСТИУГОЛЬНЫМ СТЕРЖНЕМ ИЗ НЕРЖАВЕЮЩЕЙ СТАЛИ AISI 316



### TESTA CILINDRICA CORPO SEMI-ESAGONALE CIECO

STAINLESS STEEL (A4) BLIND RIVET NUTS CYLINDRICAL HEAD-HALF HEXAGONAL SHANK - CLOSED END TYPE  
ECROUS A SERTIR EN ACIER INOXYDABLE (A4) TÊTE CYLINDRIQUE QUEUE EN PARTIE HEXAGONALE  
ГЛУХАЯ ВСТАВКИ С РЕЗЬБОЙ С ЦИЛИНДРИЧЕСКОЙ ГОЛОВКОЙ И НЕ ПОЛНОСТЬЮ ШЕСТИУГОЛЬНЫМ СТЕРЖНЕМ ИЗ НЕРЖАВЕЮЩЕЙ СТАЛИ (A4)

## INSERTI FILETTATI ALLUMINIO



### TESTA CILINDRICA CORPO LISCIO

ALUMINIUM BLIND RIVET NUTS CYLINDRICAL HEAD BODY  
ECROUS A SERTIR EN ALUMINIUM TÊTE CYLINDRIQUE  
ВСТАВКИ С РЕЗЬБОЙ С ЦИЛИНДРИЧЕСКОЙ ГОЛОВКОЙ ИЗ АЛЮМИНИЯ



### TESTA RIDOTTA CORPO LISCIO

ALUMINIUM BLIND RIVET NUTS REDUCED HEAD BODY  
ECROUS A SERTIR EN ALUMINIUM TÊTE RÈDUITE  
ВСТАВКИ С РЕЗЬБОЙ С СУЖЕННОЙ ГОЛОВКОЙ ИЗ АЛЮМИНИЯ



### TESTA CILINDRICA CORPO ZIGRINATO

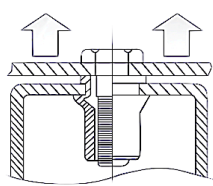
ALUMINIUM BLIND RIVET NUTS CYLINDRICAL HEAD  
ECROUS A SERTIR EN ALUMINIUM TÊTE CYLINDRIQUE  
ВСТАВКИ С РЕЗЬБОЙ С ЦИЛИНДРИЧЕСКОЙ ГОЛОВКОЙ ИЗ АЛЮМИНИЯ



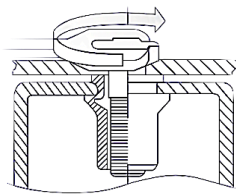
### TESTA RIDOTTA CORPO ZIGRINATO

ALUMINIUM BLIND RIVET NUTS REDUCED HEAD BODY  
ECROUS A SERTIR EN ALUMINIUM TÊTE RÈDUITE  
ВСТАВКИ С РЕЗЬБОЙ С СУЖЕННОЙ ГОЛОВКОЙ ИЗ АЛЮМИНИЯ

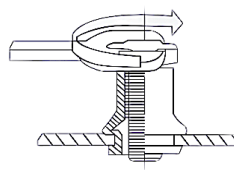
# Scheda Tecnica



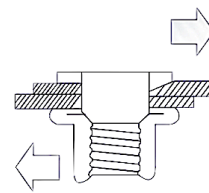
CARICO PROVA ASSIALE



COPPIA DI ROTTURA



COPPIA DI ROTAZIONE



RESISTENZA AL TAGLIO

Tabella 1 **CARICO PROVA ASSIALE**

Unit:N

TONDO ESAGONALE,TESTA	ACCIAIO,	M3	M4	M5	M6	M8	M10	M12
TONDA,RIDOTTA,SVASATA	ACCIAIO INOX	3900	6800	11500	16500	25000	32000	34000
TONDO ESAGONALE,TESTA	Alluminio	1900	4000	6500	7800	12300	17500	---
TONDA,RIDOTTA,SVASATA								

Tabella 2 **COPPIA DI ROTTURA**

Unit:N.m

TESTA PIANA,	ACCIAIO,	M3	M4	M5	M6	M8	M10	M12
TONDO,ESAGONALE	ACCIAIO INOX	2	5	8.5	15	26	50	80
TESTA SVASATA,TONDO	ACCIAIO,	M3	M4	M5	M6	M8	M10	M12
	ACCIAIO INOX	1	4	8	15	26	45	70
TESTA RIDOTTA,	ACCIAIO,	M3	M4	M5	M6	M8	M10	M12
TONDO,ESAGONALE	ACCIAIO INOX	1	3	6	11	20	32	50
TESTA RIDOTTA,PIANA,TONDO	ALLUMINIO	M3	M4	M5	M6	M8	M10	M12
		0.7	2.5	5	8	20	25	---

Tabella 3 **COPPIA DI ROTAZIONE**

Unit:N.m

TESTA PIANA,TONDO	ACCIAIO,	M3	M4	M5	M6	M8	M10	M12
	ACCIAIO INOX	0.5	1	2	4.5	5.5	11	30
TESTA RIDOTTA,	ACCIAIO,	M3	M4	M5	M6	M8	M10	M12
TONDO	ACCIAIO INOX	0.4	0.8	1.5	3.5	4.5	8.5	24
TESTA RIDOTTA,	ALLUMINIO	M3	M4	M5	M6	M8	M10	M12
TONDO		0.25	0.9	1.5	3.5	5	6.5	21
TESTA PIANA,TONDO	ALLUMINIO	M3	M4	M5	M6	M8	M10	M12
		0.2	0.7	1.2	2.5	4	5	16

Tabella 4 **RESISTENZA AL TAGLIO**

Unit:N

TONDO ESAGONALE,TESTA	ACCIAIO,	M3	M4	M5	M6	M8	M10	M12
TONDA,RIDOTTA,SVASATA	ACCIAIO INOX	900	1500	2000	3000	4400	5000	6500
TONDO ESAGONALE,TESTA	Alluminio	600	1000	1200	2000	2400	3800	---
TONDA,RIDOTTA,SVASATA								

1. Acciaio zincato

2. Acciaio inox

3. Alluminio

**TUTTI I VALORI DELLA PRESENTE TABELLA SONO DARITENERSI PURAMENTE INDICATIVI.**

(PER AVERE PRESTAZIONI CERTE VANNO TESTATE PRIMA DELLA PRODUZIONE IN SERIE DIRETTAMENTE SULL' APPLICAZIONE)

# INSERTI FILETTATI ACCIAIO ZINCATO

## TESTA CILINDRICA CORPO ZIGRINATO

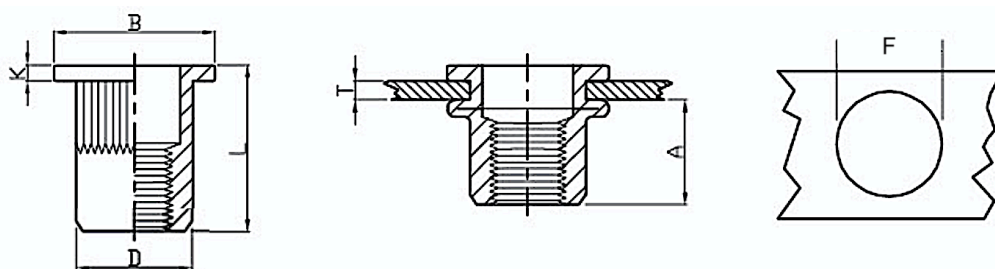
STEEL BLIND RIVET NUTS CYLINDRICAL HEAD BODY

ECROUS A SERTIR ACIER TÊTE CYLINDRIQUE

ВСТАВКИ С РЕЗЬБОЙ ИЗ СТАЛИ С ЦИЛИНДРИЧЕСКОЙ ГОЛОВКОЙ



Cod. SERIE	SERIE	MATERIALE
101	FTTZ	Acciaio Zincato bianco



Articolo	M	T Spessore	F +0.1 0	L	A	B	D +0.07 -0.2	K
FTTZ03-1	M3	0.5 - 1.5	5.0	10.0	6.0	8.0	4.9	0.8
FTTZ03-2	M3	2.0 - 3.5	5.0	11.5	6.0	8.0	4.9	0.8
FTTZ04-1	M4	0.5 - 2.0	6.0	10.5	6.0	9.0	5.9	0.8
FTTZ04-2	M4	2.0 - 3.5	6.0	12.0	6.0	9.0	5.9	0.8
FTTZ05-1	M5	0.5 - 2.5	7.0	13.0	7.5	10.0	6.9	1.0
FTTZ05-2	M5	2.5 - 5.0	7.0	16.5	8.5	10.0	6.9	1.0
FTTZ06-1	M6	0.5 - 3.0	9.0	15.5	9.2	12.3(*13)	8.9	1.3
FTTZ06-2	M6	3.0 - 5.5	9.0	19.5	10.5	12.3(*13)	8.9	1.3
FTTZ08-1	M8	1.0 - 3.5	11.0	18.5	11.5	14.5(*16)	10.9	1.5
FTTZ08-2	M8	3.5 - 6.0	11.0	21.0	11.5	14.5(*16)	10.9	1.5
FTTZ10-1 (12H)	M10	1.0 - 3.5	12.0	19.0	11.0	16.0	11.9	1.6
FTTZ10-2 (12H)	M10	3.5 - 5.5	12.0	24.0	11.0	16.0	11.9	1.6
FTTZ10-1 (13H)	M10	1.0 - 4.0	13.0	21.5	13.5	17(*19)	12.9	1.7
FTTZ10-2 (13H)	M10	4.0 - 6.5	13.0	24.0	13.5	17(*19)	12.9	1.7
FTTZ12-1 (15H)	M12	1.0 - 4.0	15.0	22.0	13.5	18.0	14.9	1.7
FTTZ12-2 (15H)	M12	4.0 - 6.5	15.0	25.0	14.0	18.0	14.9	1.7
FTTZ12-1 (16H)	M12	1.0 - 4.0	16.0	25.0	15.0	22.0	15.9	2.0
FTTZ12-2 (16H)	M12	3.5 - 6.0	16.0	28.0	16.0	22.0	15.9	2.0

### COME ORDINARE:

CODICE SERIE + ARTICOLO + QUANTITA' Esempio: 101 FTTZ03-1 1000

# INSERTI FILETTATI ACCIAIO ZINCATO

## TESTA CILINDRICA CORPO LISCIO

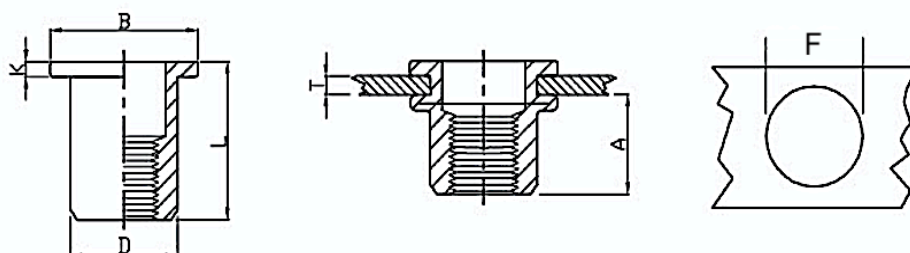
STEEL BLIND RIVET NUTS CYLINDRICAL HEAD BODY

ECROUS A SERTIR EN ACIER TÊTE CYLINDRIQUE

ВСТАВКИ С РЕЗЬБОЙ ИЗ СТАЛИ С ЦИЛИНДРИЧЕСКОЙ ГОЛОВКОЙ



Cod. SERIE	SERIE	MATERIALE
101	FTTL	Acciaio Zincato bianco



Articolo	M	T Spessore	F +0.1 0	L	A	B	D +0.07 -0.2	K
FTTL03-1	M3	0.5 - 1.5	5.0	8.5	4.7	7.2	4.9	0.8
FTTL03-2	M3	1.5 - 2.5	5.0	9.5	4.7	7.2	4.9	0.8
FTTL04-1	M4	0.5 - 2.0	6.0	10.5	6.0	8.5	5.9	0.8
FTTL04-2	M4	2.0 - 3.5	6.0	12.0	6.0	8.5	5.9	0.8
FTTL05-1	M5	0.5 - 2.5	7.0	13.0	7.5	10.0	6.9	1.0
FTTL05-2	M5	2.5 - 5.0	7.0	17.0	8.5	10.0	6.9	1.0
FTTL06-1	M6	0.5 - 3.0	9.0	15.5	9.2	12.3	8.9	1.3
FTTL06-2	M6	3.0 - 5.5	9.0	18.0	9.2	12.3	8.9	1.3
FTTL08-1	M8	0.5 - 3.5	11.0	18.5	11.5	15.0	10.9	1.5
FTTL08-2	M8	3.5 - 6.0	11.0	21.0	11.5	15.0	10.9	1.5
FTTL10-1 (12H)	M10	1.0 - 3.5	12.0	19.0	12.5	16.0	11.9	1.6
FTTL10-2 (12H)	M10	3.5 - 6.0	12.0	24.0	12.5	16.0	11.9	1.6
FTTL10-1 (13H)	M10	1.0 - 3.5	13.0	19.0	12.5	17.0	12.9	1.6
FTTL10-2 (13H)	M10	3.5 - 6.0	13.0	24.0	12.5	17.0	12.9	1.6
FTTL12-1 (15H)	M12	1.0 - 4.0	15.0	22.0	13.5	18.0	14.9	1.7
FTTL12-1 (16H)	M12	1.0 - 4.0	16.0	25.0	16.0	22.0	15.9	2.0

Le dimensioni sono indicative, non vincolanti, espresse in mm. Non binding dimensions, expressed in mm.

### COME ORDINARE:

CODICE SERIE + ARTICOLO + QUANTITA' Esempio: 101 FTTL03-1 1000

# INSERTI FILETTATI ACCIAIO ZINCATO

## TESTA RIDOTTA CORPO ZIGRINATO

STEEL BLIND RIVET NUTS REDUCED HEAD BODY

ECROUS A SERTIR EN ACIER TÊTE RÉDUITE

ВСТАВКИ С РЕЗЬБОЙ ИЗ СТАЛИ С СУЖЕННОЙ ГОЛОВКОЙ



Cod. SERIE

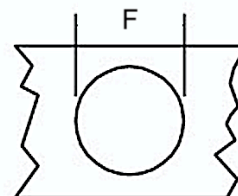
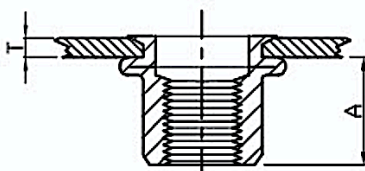
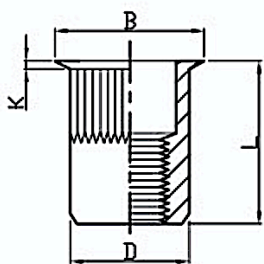
SERIE

MATERIALE

101

FTRZ

Acciaio Zincato bianco



Articolo	M	T Spessore	F +0.1 0	L	A	B	D +0.07 -0.2	K
FTRZ03-1	M3	0.5 - 2.0	5.0	9.0	6.2	6.0	4.9	0.5
FTRZ03-2	M3	1.5 - 3.0	5.0	11.5	6.2	6.0	4.9	0.5
FTRZ04-1	M4	0.5 - 2.0	6.0	11.2	7.0	7.0	5.9	0.5
FTRZ04-2	M4	2.0 - 4.0	6.0	13.0	7.0	7.0	5.9	0.5
FTRZ05-1	M5	0.5 - 2.0	7.0	11.5	7.0	8.0	6.9	0.5
FTRZ05-2	M5	2.0 - 4.0	7.0	13.0	7.0	8.0	6.9	0.5
FTRZ06-1	M6	0.5 - 2.5	9.0	14.0	8.5	10.0	8.9	0.6
FTRZ06-2	M6	2.5 - 5.0	9.0	16.0	8.5	10.0	8.9	0.6
FTRZ08-1	M8	0.5 - 3.0	11.0	16.5	10.0	12.0	10.9	0.65
FTRZ08-2	M8	3.0 - 5.0	11.0	18.5	10.0	12.0	10.9	0.65
FTRZ10-1 (12H)	M10	1.0 - 3.5	12.0	19.5	12.5	13.0	11.9	0.7
FTRZ10-2 (12H)	M10	3.5 - 5.5	12.0	22.0	12.5	13.0	11.9	0.7
FTRZ10-1 (13H)	M10	1.0 - 3.5	13.0	19.5	12.5	14.0	12.9	0.7
FTRZ10-2 (13H)	M10	3.5 - 6.0	13.0	22.0	12.5	14.0	12.9	0.7
FTRZ12-1 (15H)	M12	0.5 - 3.5	15.0	22.5	15.2	16.5	14.9	0.8
FTRZ12-1 (16H)	M12	1.0 - 4.0	16.0	24.2	16.2	17.6	15.9	0.8
FTRZ12-2 (16H)	M12	4.0 - 6.5	16.0	27.5	16.2	17.6	15.9	0.8

Le dimensioni sono indicative, non vincolanti, espresse in mm. Non binding dimensions, expressed in mm.

### COME ORDINARE:

CODICE SERIE + ARTICOLO + QUANTITA'

Esempio: 101 FTRZ03-1 1000

# INSERTI FILETTATI ACCIAIO ZINCATO

## TESTA RIDOTTA CORPO ZIGRINATO

STEEL BLIND RIVET NUTS REDUCED HEAD BODY

ECROUS A SERTIR EN ACIER TÊTE RÉDUITE

ВСТАВКИ С РЕЗЬБОЙ ИЗ СТАЛИ С СУЖЕННОЙ ГОЛОВКОЙ



Cod. SERIE

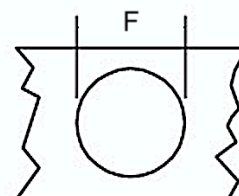
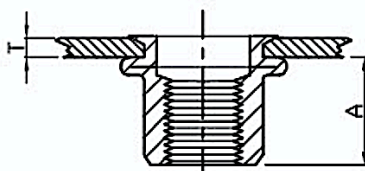
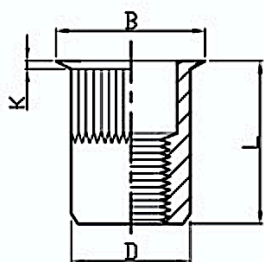
SERIE

MATERIALE

101

FTRRZ

Acciaio Zincato bianco



Articolo	M	T Spessore	F +0.1 0	L	A	B	D +0.07 -0.2	K
FTRRZ03-1	M3	0.5 - 2.0	5.0	9.0	6.2	6.0	4.9	0.35
FTRRZ04-1	M4	0.5 - 2.0	6.0	11.2	7.0	7.0	5.9	0.35
FTRRZ05-1	M5	0.5 - 2.0	7.0	11.5	7.0	8.0	6.9	0.35
FTRRZ06-1	M6	0.5 - 2.5	9.0	14.0	8.5	10.0	8.9	0.40

Le dimensioni sono indicative, non vincolanti, espresse in mm. Non binding dimensions, expressed in mm.

COME ORDINARE:

CODICE SERIE + ARTICOLO + QUANTITA' Esempio: 101 FTRRZ03-1 1000

# INSERTI FILETTATI ACCIAIO ZINCATO

## TESTA RIDOTTA CORPO LISCIO

STEEL BLIN DRIVET NUTS REDUCED HEAD BODY

ECROUS A SERTIR EN ACIER TÊTE RÈDUITE

ВСТАВКИ С РЕЗЬБОЙ ИЗ СТАЛИ С СУЖЕННОЙ ГОЛОВКОЙ



Cod. SERIE

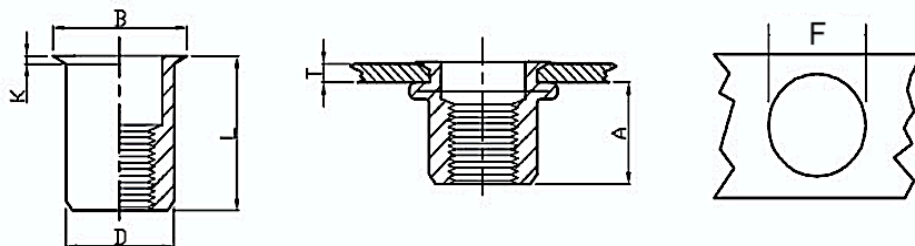
SERIE

MATERIALE

101

FTRL

Acciaio Zincato bianco



Articolo	M	T Spessore	F +0.1 0	L	A	B	D +0.07 -0.2	K
FTRL03-1	M3	0.5 - 1.5	5.0	9.0	6.2	6.0	4.9	0.5
FTRL03-2	M3	1.5 - 2.5	5.0	10.0	6.2	6.0	4.9	0.5
FTRL04-1	M4	0.5 - 2.0	6.0	10.5	6.5	7.0	5.9	0.5
FTRL04-2	M4	2.0 - 4.0	6.0	13.0	6.5	7.0	5.9	0.5
FTRL05-1	M5	0.5 - 2.0	7.0	11.5	7.0	8.0	6.9	0.5
FTRL05-2	M5	2.0 - 4.0	7.0	13.0	7.0	8.0	6.9	0.5
FTRL06-1	M6	0.5 - 2.5	9.0	14.0	8.5	10.5	8.9	0.6
FTRL06-2	M6	2.5 - 5.0	9.0	17.0	8.5	10.0	8.9	0.6
FTRL08-1	M8	0.5 - 3.0	11.0	16.5	10.0	12.0	10.9	0.65
FTRL08-2	M8	3.0 - 5.0	11.0	18.5	10.0	12.0	10.9	0.65
FTRL10-1(12H)	M10	0.5 - 3.0	12.0	18.0	12.5	13.0	11.9	0.7
FTRL10-2(12H)	M10	3.0 - 5.5	12.0	21.0	13.0	13.0	11.9	0.7
FTRL10-1(13H)	M10	0.5 - 3.0	13.0	17.7	13.0	14.1	12.9	0.7
FTRL10-2(13H)	M10	3.0 - 5.5	13.0	21.0	14.0	14.1	12.9	0.7

Le dimensioni sono indicative, non vincolanti, espresse in mm. Non binding dimensions, expressed in mm.

### COME ORDINARE:

CODICE SERIE + ARTICOLO + QUANTITA'

Esempio: 101 FTRL03-1 1000

# INSERTI FILETTATI ACCIAIO ZINCATO

## TESTA SVASATA CORPO ZIGRINATO

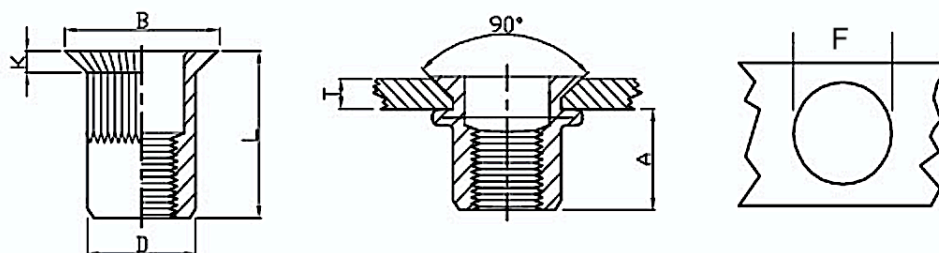
STEEL BLIND RIVET NUTS COUNTERSUNK HEAD BODY

ECROUS A SERTIR EN ACIER TÊTE FRAISÉE

ВСТАВКИ С РЕЗЬБОЙ ИЗ СТАЛИ С РАСКЛЕШЕННОЙ ГОЛОВКОЙ



Cod. SERIE	SERIE	MATERIALE
101	FTSZ	Acciaio Zincato bianco



Articolo	M	T Spessore	F +0.1 0	L	A	B	D +0.07 -0.2	K
FTSZ03-1	M3	1.5-2.5	5.0	8.5	4.5	7.5	4.9	1.5
FTSZ03-2	M3	2.5-4.0	5.0	10.5	4.5	7.5	4.9	1.5
FTSZ04-1	M4	1.5-3.0	6.0	12.0	6.5	9.0	5.9	1.5
FTSZ04-2	M4	3.5-5.0	6.0	13.0	6.5	9.0	5.9	1.5
FTSZ05-1	M5	1.5-3.5	7.0	13.0	7.5	10.0	6.9	1.5
FTSZ05-2	M5	3.5-5.0	7.0	15.0	7.5	10.0	6.9	1.5
FTSZ06-1	M6	1.5-4.0	9.0	15.5	9.0	12.0	8.9	1.5
FTSZ06-2	M6	4.0-6.0	9.0	17.0	9.0	12.0	8.9	1.5
FTSZ08-1	M8	2.0-4.5	11.0	18.5	11.0	14.0	10.9	1.5
FTSZ08-2	M8	4.5-6.0	11.0	19.0	11.0	14.0	10.9	1.5
FTSZ10-1 (12H)	M10	2.0-5.0	12.0	21.0	13.0	15.0	11.9	1.5
FTSZ10-2 (12H)	M10	3.5-6.5	12.0	20.5	13.0	15.0	11.9	1.5
FTSZ10-1 (13H)	M10	2.0-5.0	13.0	21.0	13.0	16.0	12.9	1.5
FTSZ10-2 (13H)	M10	3.5-6.5	13.0	24.0	13.0	16.0	12.9	1.5
FTSZ12-1 (16H)	M12	2.0-5.0	16.0	24.0	16.5	19.0	15.9	1.9
FTSZ12-2 (16H)	M12	5.0-7.0	16.0	24.0	16.5	19.0	15.9	1.9

Le dimensioni sono indicative, non vincolanti, espresse in mm. Non binding dimensions, expressed in mm.

### COME ORDINARE:

CODICE SERIE + ARTICOLO + QUANTITA' Esempio: 101 FTSZ03-1 1000

# INSERTI FILETTATI ACCIAIO ZINCATO

## TESTA CILINDRICA CORPO ESAGONALE

STEEL BLIND RIVET NUTS CYLINDRICAL HEAD HEXAGONAL SHANK

ECROUS A SERTIR EN ACIER TÊTE CYLINDRIQUE QUEUE HEXAGONALE

ВСТАВКИ С РЕЗЬБОЙ ИЗ СТАЛИ С ЦИЛИНДРИЧЕСКОЙ ГОЛОВКОЙ И ШЕСТИУГОЛЬНЫМ СТЕРЖНЕМ



Cod. SERIE

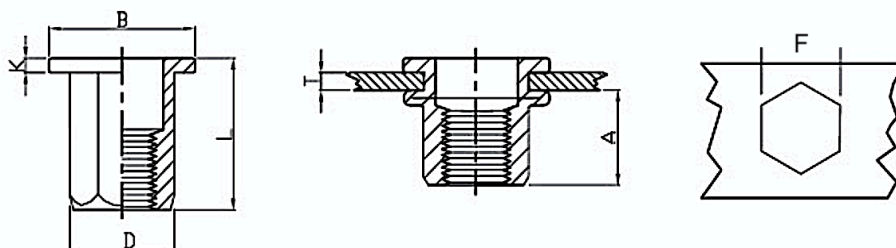
SERIE

MATERIALE

101

FTTE

Acciaio Zincato bianco



Articolo	M	T Spessore	F +0.1 0	L	A	B	D +0.07 -0.2	K
FTTE04-1	M4	0.5 - 2.0	6.0	11.0	6.5	9.0	5.9	0.8
FTTE04-2	M4	2.0 - 4.0	6.0	13.0	6.5	9.0	5.9	0.8
FTTE05-1	M5	0.5 - 2.5	7.0	14.0	8.0	10.0	6.9	1.0
FTTE05-2	M5	2.5 - 5.0	7.0	16.5	8.0	10.0	6.9	1.0
FTTE06-1	M6	0.5 - 3.0	9.0	15(*16)	8.5	12.7 (*13)	8.9	1.35
FTTE06-2	M6	3.0 - 5.5	9.0	19.5	8.5	12.7(*13)	8.9	1.35
FTTE08-1	M8	1.0 - 3.5	11.0	18.0	10.5	16.0	10.9	1.5
FTTE08-2	M8	3.5 - 5.5	11.0	21.0	10.5	16.0	10.9	1.5
FTTE10-1 (12H)	M10	1.0 - 3.5	12.0	21.0	13.5	18.0	11.9	1.7
FTTE10-2 (12H)	M10	3.5 - 6.0	12.0	22.5	13.5	18.0	11.9	1.7
FTTE10-1 (13H)	M10	1.0 - 3.5	13.0	21(* 23)	12.5	18 (*19)	12.9	1.7
FTTE10-2 (13H)	M10	3.5 - 6.0	13.0	24	12.5	18	12.9	1.7
FTTE 12-1 (15H)	M12	1.0 - 4.0	15.0	23.0	14.0	20.0	14.9	1.7
FTTE 12-2 (15H)	M12	4.0 - 7.0	15.0	24.3	14.0	20.0	14.9	1.7
FTTE 12-1 (16H)	M12	2.0 - 5.0	16.0	27.0	16.5	23.0	15.9	2.0
FTTE 12-2 (16H)	M12	5.0 - 8.0	16.0	30.0	16.5	23.0	15.9	2.0

Le dimensioni sono indicative, non vincolanti, espresse in mm. Non binding dimensions, expressed in mm.

COME ORDINARE:

CODICE SERIE + ARTICOLO + QUANTITA'

Esempio: 101 FTTE04-1 1000

# INSERTI FILETTATI ACCIAIO ZINCATO

## TESTA CILINDRICA CORPO SEMI-ESAGONALE

STEEL BLIND RIVET NUTS CYLINDRICAL HEAD-HALF HEXAGONAL SHANK

ECROUS A SERTIR EN ACIER TÊTE CYLINDRIQUE QUEUE EN PARTIE HEXAGONALE

ВСТАВКИ С РЕЗЬБОЙ ИЗ СТАЛИ С ЦИЛИНДРИЧЕСКОЙ ГОЛОВКОЙ И НЕ ПОЛНОСТЬЮ ШЕСТИУГОЛЬНЫМ СТЕРЖНЕМ



Cod. SERIE

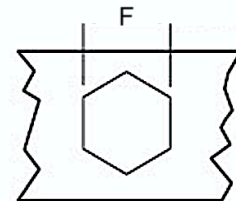
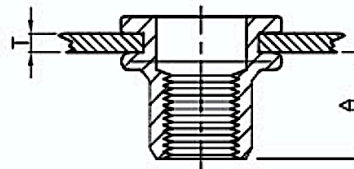
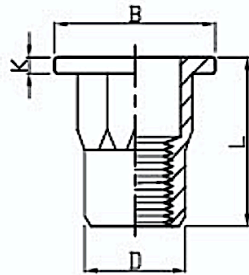
SERIE

MATERIALE

101

FTTSE

Acciaio Zincato bianco



Articolo	M	T Spessore	F +0.1 0	L	A	B	D +0.07 -0.2	K
FTTSE04-1	M4	0.5 - 2.0	6.0	11.0	7.0	9.0	5.9	0.8
FTTSE04-2	M4	2.0 - 4.0	6.0	13.0	7.0	9.0	5.9	0.8
FTTSE05-1	M5	0.5 - 2.5	7.0	13.0	7.5	10.0	6.9	1.0
FTTSE05-2	M5	2.5 - 4.0	7.0	14.0	7.5	10.0	6.9	1.0
FTTSE06-1	M6	0.5 - 3.0	9.0	15.5	9.2	12.7(*13.0)	8.9	1.35
FTTSE06-2	M6	3.0 - 5.0	9.0	19.5	9.2	12.7(*13.0)	8.9	1.35
FTTSE08-1	M8	1.0 - 3.5	11.0	18.0	11.2	16.0	10.9	1.5
FTTSE08-2	M8	3.5 - 5.5	11.0	21.0	11.2	16.0	10.9	1.5
FTTSE10-1 (12H)	M10	1.0 - 3.5	12.0	19.0	11.0	17.0	11.9	1.6
FTTSE10-1 (13H)	M10	1.0 - 3.5	13.0	21.0	12.5	18.0	12.9	1.7
FTTSE10-2 (13H)	M10	3.5 - 6.0	13.0	21.0	12.8	18.0(*19.0)	14.9	1.7
FTTSE12-1 (16H)	M12	2.0 - 5.0	16.0	27.5	16.5	23.0	15.9	2.0

Le dimensioni sono indicative, non vincolanti, espresse in mm. Non binding dimensions, expressed in mm.

COME ORDINARE:

CODICE SERIE + ARTICOLO + QUANTITA'

Esempio: 101 FTTSE04-1 1000

# INSERTI FILETTATI ACCIAIO ZINCATO

## TESTA RIDOTTA TUTTO ESAGONO

STEEL BLIND RIVET NUTS REDUCED HEAD HEXAGONAL SHANK

ECROUS A SERTIR EN ACIER TÊTE REDUITE QUEUE HEXAGONALE

ВСТАВКИ С РЕЗЬБОЙ ИЗ СТАЛИ С УЖЕННОЙ ГОЛОВКОЙ И ШЕСТИУГОЛЬНЫМ СТЕРЖНЕМ



Cod. SERIE

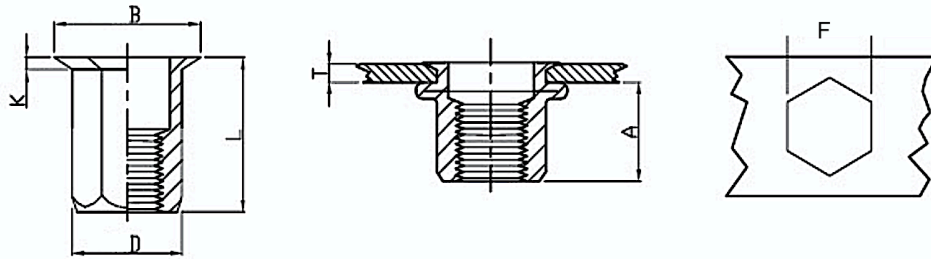
SERIE

MATERIALE

101

FER

Acciaio Zincato bianco



Articolo	M	T Spessore	F +0.1 0	L	A	B	D +0.07 -0.2	K
FER03-1	M3	0.5 - 1.5	5.0	8.50	5.0	6.0	4.9	0.5
FER03-2	M3	1.5 - 3.0	5.0	10.5	5.0	6.0	4.9	0.5
FER04-1	M4	0.5 - 2.5	6.0	11.0	6.7	7.0	5.9	0.5
FER04-2	M4	2.5 - 5.0	6.0	13.5	6.7	7.0	5.9	0.5
FER05-1	M5	0.5 - 3.0	7.0	14.5	9.0	8.0	6.9	0.5
FER05-2	M5	3.0 - 5.0	7.0	16.0	9.0	8.0	6.9	0.5
FER06-1	M6	1.0 - 3.5	9.0	16.0	10.0	10.0	8.9	0.6
FER06-2	M6	3.5 - 6.0	9.0	18.0	10.0	10.0	8.9	0.6
FER08-1	M8	1.0 - 4.0	11.0	18.0	11.5	12.0	10.9	0.65
FER08-2	M8	4.0 - 6.0	11.0	20.0	11.5	12.0	10.9	0.65
FER10-1 (12H)	M10	1.0 - 3.5	12.0	19.0	12.5	14.5	11.9	0.75
FER10-2 (12H)	M10	3.5 - 6.0	12.0	23.5	14.5	13.5	11.9	0.75
FER10-1 (13H)	M10	1.0 - 3.5	13.0	19.0	12.5	14.5	12.9	0.75
FER10-2 (13H)	M10	3.5 - 6.0	13.0	23.5	14.5	14.5	12.9	0.75
FER12-1 (15H)	M12	1.0 - 4.0	15.0	25.0	15.5	18.0	14.9	1.0
FER12-2 (15H)	M12	4.0 - 7.0	15.0	28.0	15.5	18.0	14.9	1.0
FER12-1 (16H)	M12	1.0 - 4.0	16.0	25.0	15.5	18.0	15.9	1.0
FER12-2 (16H)	M12	4.0 - 7.0	16.0	28.0	15.5	18.0	15.9	1.0

Le dimensioni sono indicative, non vincolanti, espresse in mm. Non binding dimensions, expressed in mm.

### COME ORDINARE:

CODICE SERIE + ARTICOLO + QUANTITA' Esempio: 101 FER03-1 1000

# INSERTI FILETTATI ACCIAIO ZINCATO

## TESTA RIDOTTA CORPO SEMI-ESAGONALE

STEEL BLIND RIVET NUTS REDUCED HEAD-HALF HEXAGONAL SHANK

ECROUS A SERTIR EN ACIER TÊTE RÉDUITE QUEUE EN PARTIE HEXAGONALE

ВСТАВКИ С РЕЗЬБОЙ ИЗ СТАЛИ С СУЖЕННОЙ ГОЛОВКОЙ И НЕ ПОЛНОСТЬЮ ШЕСТИУГОЛЬНЫМ СТЕРЖНЕМ



Cod. SERIE

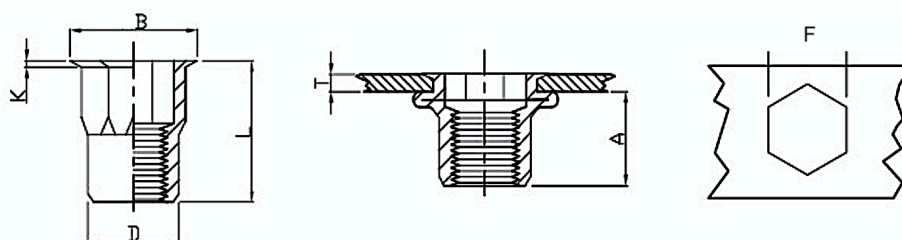
SERIE

MATERIALE

101

FTRSE

Acciaio Zincato bianco



Articolo	M	T Spessore	F +0.1 0	L	A	B	D +0.07 -0.2	K
FTRSE03-1	M3	0.5 - 1.5	5.0	8.5	5.5	6.0	4.9	0.5
FTRSE03-2	M3	1.5 - 2.5	5.0	10.5	5.5	6.0	4.9	0.5
FTRSE04-1	M4	0.5 - 2.0	6.0	12.0	8.3	7.0	5.9	0.5
FTRSE04-2	M4	2.0 - 4.0	6.0	14.0	8.3	7.0	5.9	0.5
FTRSE05-1	M5	0.5 - 2.5	7.0	13.0	8.7	8.0	6.9	0.5
FTRSE05-2	M5	2.5 - 4.5	7.0	15.0	8.7	8.0	6.9	0.5
FTRSE06-1-MICRO	M6	0.5 - 2.0	9.0	11.0	7.5	10.0	8.9	0.6
FTRSE06-1	M6	1.0 - 3.5	9.0	16.0	10.5	10.0	8.9	0.6
FTRSE06-2	M6	3.5 - 5.0	9.0	18.0	10.5	10.0	8.9	0.6
FTRSE08-1	M8	1.0 - 3.5	11.0	17.5	11.3	12.0	10.9	0.65
FTRSE08-2	M8	3.5 - 6.0	11.0	20.0	11.3	12.0	10.9	0.65
FTRSE10-1 (12H)	M10	1.0 - 4.0	12.0	21.0	12.8	14.5	11.9	0.75
FTRSE10-2 (12H)	M10	4.0 - 6.0	12.0	23.0	12.8	14.5	11.9	0.75
FTRSE10-1 (13H)	M10	1.0 - 4.0	13.0	21.0	12.8	14.5	12.9	0.75
FTRSE10-2 (13H)	M10	4.0 - 6.0	13.0	23.0	12.8	14.5	12.9	0.75
FTRSE12-1 (15H)	M12	1.0 - 4.0	15.0	26.0	14.8	17.5	14.9	1.0
FTRSE12-2 (15H)	M12	4.0 - 7.0	15.0	28.0	14.8	17.5	14.9	1.0
FTRSE12-1 (16H)	M12	1.0 - 4.0	16.0	26.0	14.8	17.5	15.9	1.0

Le dimensioni sono indicative, non vincolanti, espresse in mm. Non binding dimensions, expressed in mm.

COME ORDINARE:

CODICE SERIE + ARTICOLO + QUANTITA'

Esempio: 101 FTRSE03-1 1000

# INSERTI FILETTATI ACCIAIO ZINCATO

## TESTA CILINDRICA CORPO ZIGRINATO CIECO

STEEL BLIND RIVET NUTS CYLINDRICAL HEAD-CLOSED END BODY

ECROUS A SERTIR AVEUGLES EN ACIER TÊTE CYLINDRIQUE

ГЛУХИЕ ВСТАВКИ С РЕЗЬБОЙ ИЗ СТАЛИ С ЦИЛИНДРИЧЕСКОЙ ГОЛОВКОЙ



Cod. SERIE

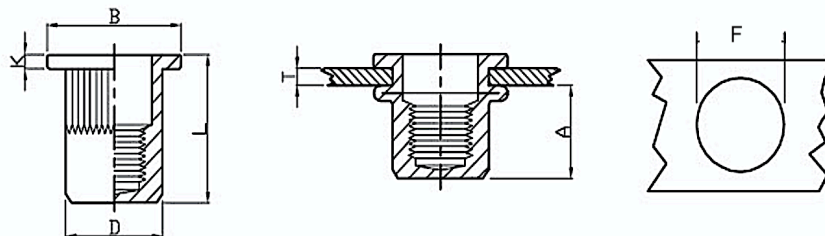
SERIE

MATERIALE

101

FTTCZ

Acciaio Zincato bianco



Articolo	M	T Spessore	F +0.1 0	L	A	B	D +0.07 -0.2	K
FTTCZ03-1	M3	0.5 - 1.5	5.0	14.5	10.3	7.0	4.9	0.8
FTTCZ04-1	M4	0.5 - 2.0	6.0	16.0	11.3	9.0	5.9	0.8
FTTCZ04-2	M4	2.0 - 4.0	6.0	18.0	11.3	9.0	5.9	0.8
FTTCZ05-1	M5	0.5 - 3.0	7.0	17.0	11.5	10.0	6.9	1.0
FTTCZ05-2	M5	2.5 - 5.0	7.0	19.0	11.5	10.0	6.9	1.0
FTTCZ06-1	M6	0.5 - 3.0	9.0	19.5	12.7	12.3	8.9	1.3
FTTCZ06-2	M6	3.0 - 5.0	9.0	21.0	12.7	12.3	8.9	1.3
FTTCZ08-1	M8	0.5 - 3.0	11.0	21.5	14.8	15.0	10.9	1.5
FTTCZ08-2	M8	3.0 - 5.5	11.0	24.0	14.8	15.0	10.9	1.5
FTTCZ10-1 (13H)	M10	1.0 - 4.0	13.0	27.0	19.2	17.0	12.9	1.6
FTTCZ10-2 (13H)	M10	3.5 - 6.0	13.0	32.5	22.0	17.0	12.9	1.6

Le dimensioni sono indicative, non vincolanti, espresse in mm. Non binding dimensions, expressed in mm.

COME ORDINARE:

CODICE SERIE + ARTICOLO + QUANTITA'

Esempio: 101 FTTCZ03-1 1000

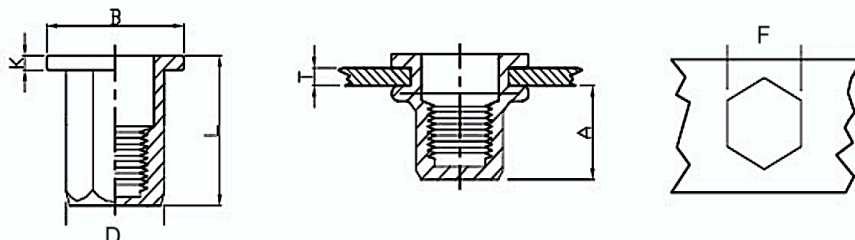
# INSERTI FILETTATI ACCIAIO ZINCATO

## TESTA CILINDRICA CORPO ESAGONALE CIECO

STEEL BLIND RIVET NUTS CYLINDRICAL HEAD HEXAGONAL SHANK- CLOSED END TYPE  
 ECROUS A SERTIR AVEUGLES EN ACIER TÊTE CYLINDRIQUE QUEUE HEXAGONALE  
 ГЛУХИЕ ВСТАВКИ С РЕЗЬБОЙ ИЗ СТАЛИ С ЦИЛИНДРИЧЕСКОЙ ГОЛОВКОЙ И ШЕСТИУГОЛЬНЫМ СТЕРЖНЕМ



Cod. SERIE	SERIE	MATERIALE
101	FTTEC	Acciaio Zincato bianco



Articolo	M	T Spessore	F +0.1 0	L	A	B	D +0.07 -0.2	K
FTTEC04-1	M4	0.5 - 2.0	6.0	15.0	11.0	9.0	5.9	1.0
FTTEC04-2	M4	2.0 - 4.0	6.0	17.0	11.0	9.0	5.9	1.0
FTTEC05-1	M5	0.5 - 2.5	7.0	18.0	13.5	10.0	6.9	1.0
FTTEC05-2	M5	2.0 - 5.0	7.0	20.0	13.5	10.0	6.9	1.0
FTTEC06-1	M6	0.5 - 3.0	9.0	23.0	17.0	13.0	8.9	1.5
FTTEC06-2	M6	3.0 - 5.5	9.0	25.0	17.0	13.0	8.9	1.5
FTTEC08-1	M8	1.0 - 3.5	11.0	26.0	19.0	16.0	10.9	1.5
FTTEC08-2	M8	3.5 - 5.5	11.0	29.0	19.0	16.0	10.9	1.5
FTTEC10-1 (13H)	M10	1.0 - 4.0	13.0	33.0	25.0	19.0	12.9	2.0
FTTEC10-2 (13H)	M10	4.0 - 6.0	13.0	35.0	25.0	19.0	12.9	1.8

Le dimensioni sono indicative, non vincolanti, espresse in mm. Non binding dimensions, expressed in mm.

### COME ORDINARE:

CODICE SERIE + ARTICOLO + QUANTITA' Esempio: 101 FTTEC04-1 1000

# INSERTI FILETTATI ACCIAIO ZINCATO

## TESTA RIDOTTA CORPO ZIGRINATO CIECO

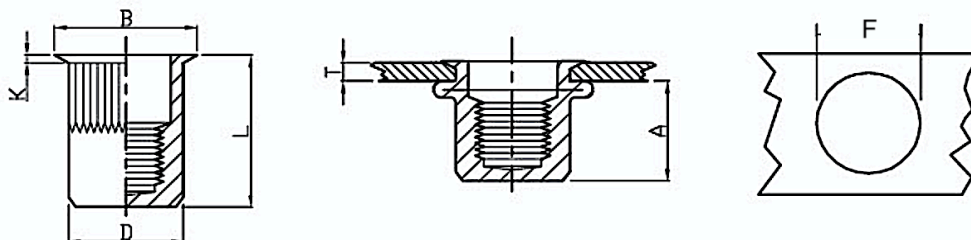
STEEL BLIND RIVET NUTS REDUCED HEAD - CLOSED END TYPE

ECROUS A SERTIR AVEUGLES EN ACIER TÊTE RÈDUITE

ГЛУХАЯ ВСТАВКИ С РЕЗЬБОЙ ИЗ СТАЛИ С СУЖЕННОЙ ГОЛОВКОЙ



Cod. SERIE	SERIE	MATERIALE
101	FTRCZ	Acciaio Zincato bianco



Articolo	M	T Spessore	F +0.1 0	L	A	B	D +0.07 -0.2	K
FTRCZ03-1	M3	0.5 - 2.0	5.0	12.5	10.0	6.0	4.9	0.5
FTRCZ03-2	M3	1.5 - 3.0	5.0	14.0	10.0	6.0	4.9	0.5
FTRCZ04-1	M4	0.5 - 2.0	6.0	15.0	11.0	7.0	5.9	0.5
FTRCZ04-2	M4	2.0 - 3.5	6.0	16.5	11.0	7.0	5.9	0.5
FTRCZ05-1	M5	0.5 - 2.0	7.0	16.5	12.5	8.0	6.9	0.5
FTRCZ05-2	M5	2.0 - 3.5	7.0	18.0	12.5	8.0	6.9	0.5
FTRCZ06-1-20.5	M6	0.5 - 3.0	9.0	20.5	15.5	10.0	8.9	0.6
FTRCZ06-1-23.0	M6	0.5 - 3.0	9.0	23.0	15.5	10.0	8.9	0.6
FTRCZ06-2	M6	3.0 - 4.5	9.0	22.0	15.5	10.0	8.9	0.6
FTRCZ08-1-23.0	M8	0.5 - 3.0	11.0	23.0	17.0	12.0	10.9	0.65
FTRCZ08-1-26.6	M8	0.5 - 3.0	11.0	26.6	17.0	12.0	10.9	0.65
FTRCZ08-2	M8	3.0 - 4.5	11.0	24.5	17.0	12.0	10.9	0.65
FTRCZ10-1(12H)	M10	1.0 - 3.0	12.0	24.5	18.2	14.0	11.9	0.7
FTRCZ10-2(12H)	M10	3.0 - 5.0	12.0	26.0	18.2	14.0	11.9	0.7
FTRCZ10-1 (13H)	M10	1.0 - 3.0	13.0	24.5	18.2	14.0	12.9	0.7
FTRCZ10-2 (13H)	M10	3.0 - 5.0	13.0	26.0	18.2	14.0	12.9	0.7
FTRCZ12-1(16H)	M12	1.0 - 4.0	16.0	29.0	20.0	17.6	15.9	0.8
FTRCZ12-2(16H)	M12	3.0 - 6.0	16.0	32.0	20.0	17.6	15.9	0.8

Le dimensioni sono indicative, non vincolanti, espresse in mm. Non binding dimensions, expressed in mm.

### COME ORDINARE:

CODICE SERIE + ARTICOLO + QUANTITA' Esempio: 101 FTRCZ03-1 1000

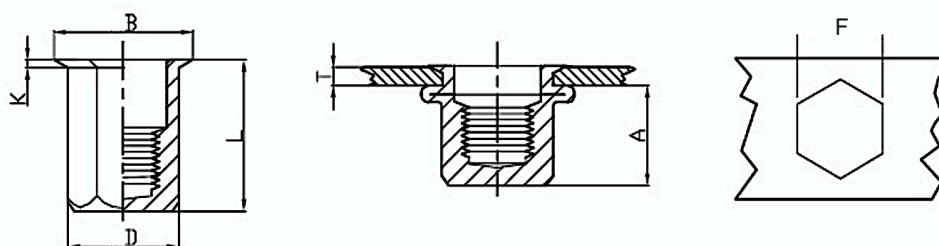
# INSERTI FILETTATI ACCIAIO ZINCATO

## TESTA RIDOTTA CORPO ESAGONALE CIECO

STEEL BLIND RIVET NUTS REDUCED HEAD HEXAGONAL SHANK- CLOSED END TYPE  
 ECROUS A SERTIR AVEUGLES EN ACIER TÊTE RÉDUITE QUEUE HEXAGONALE  
 ГЛУХИЕ ВСТАВКИ С РЕЗЬБОЙ ИЗ СТАЛИ С СУЖЕННОЙ ГОЛОВКОЙ И ШЕСТИУГОЛЬНЫМ СТЕРЖНЕМ



Cod. SERIE	SERIE	MATERIALE
101	FERC	Acciaio Zincato bianco



Articolo	M	T Spessore	F +0.1 0	L	A	B	D +0.07 -0.2	K
FERC04-1	M4	0.5 - 2.5	6.0	16.0	12.3	7.0	5.9	0.5
FERC04-2	M4	2.5 - 4.0	6.0	18.0	12.3	7.0	5.9	0.5
FERC05-1	M5	0.5 - 3.0	7.0	20.0	15.2	8.0	6.9	0.5
FERC05-2	M5	3.5 - 5.0	7.0	23.0	15.2	8.0	6.9	0.5
FERC06-1-20.5	M6	0.5 - 3.5	9.0	20.5	14.5	10.0	8.9	0.6
FERC06-1-22.8	M6	0.5 - 3.5	9.0	22.8	17.0	10.0	8.9	0.6
FERC06-2	M6	3.5 - 5.5	9.0	23.5	14.5	10.0	8.9	0.6
FERC08-1-23.0	M8	1.0 - 4.0	11.0	23.0	17.0	12.0	10.9	0.65
FERC08-1-26.5	M8	1.0 - 4.0	11.0	26.5	19.0	12.0	10.9	0.65
FERC08-2	M8	4.0 - 6.0	11.0	25.0	17.0	12.0	10.9	0.65
FERC10-1 (13H)	M10	1.0 - 4.5	13.0	28.5	20.0	14.5	12.9	0.75
FERC10-2 (13H)	M10	4.0 - 6.0	13.0	30.5	20.0	14.5	12.9	0.8
FERC12-1 (16H)	M12	1.0 - 4.0	16.0	34.0	24.0	17.5	15.9	1.0

Le dimensioni sono indicative, non vincolanti, espresse in mm. Non binding dimensions, expressed in mm.

### COME ORDINARE:

CODICE SERIE + ARTICOLO + QUANTITA' Esempio: 101 FERC04-1 1000

# INSERTI FILETTATI ACCIAIO ZINCATO

## TESTA RIDOTTA CORPO LISCIO IN POLLICI

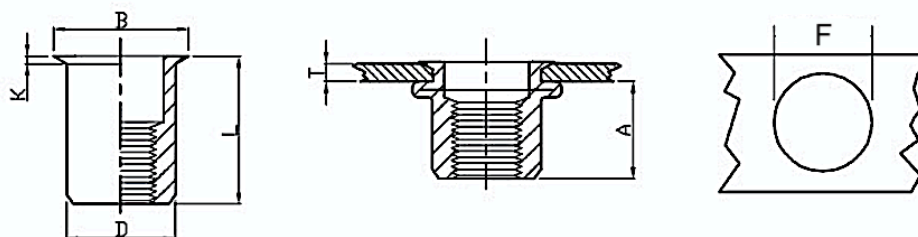
STEEL BLIND RIVET NUTS REDUCED HEAD ROUND BODY

ECROUS A SERTIR EN ACIER TÊTE REDUITE QUEUE ROND

ВСТАВКИ С РЕЗЬБОЙ ИЗ СТАЛИ С УЖЕННОЙ ГОЛОВКОЙ КРУГЛЫЙ



Cod. SERIE	SERIE	MATERIALE
101	FPRL	Acciaio Zincato bianco



Articolo	M	T Spessore	F +0.1 0	L	A	B	D +0.07 -0.2	K
FPRL03-1	M3	0.5 - 1.5	4.8	9.0	5.5	5.4	4.65	0.4
FPRL04-1	M4	0.5 - 2.0	6.4	10.5	6.5	7.0	6.25	0.5
FPRL05-1	M5	0.5 - 2.5	7.2	12.0	7.5	7.8	7.05	0.5
FPRL06-1	M6	1.0 - 3.0	9.6	15.0	9.2	10.3	9.45	0.6
FPRL08-1	M8	1.0 - 3.5	10.6	16.0	10.5	11.3	10.45	0.6
FPRL10-1	M10	1.0 - 4.0	12.8	20.0	12.8	13.8	12.65	0.65

Le dimensioni sono indicative, non vincolanti, espresse in mm. Non binding dimensions, expressed in mm.

### COME ORDINARE:

CODICE SERIE + ARTICOLO + QUANTITA' Esempio: 101 FPRL03-1 1000

# INSERTI FILETTATI ACCIAIO ZINCATO

## TESTA RIDOTTA CORPO ZIGRINATO IN POLLICI

STEEL BLIND RIVET NUTS REDUCED HEAD ROUND BODY

ECROUS A SERTIR EN ACIER TÊTE REDUITE QUEUE ROND

ВСТАВКИ С РЕЗЬБОЙ ИЗ СТАЛИ С УЖЕННОЙ ГОЛОВКОЙ КРУГЛЫЙ



Cod. SERIE

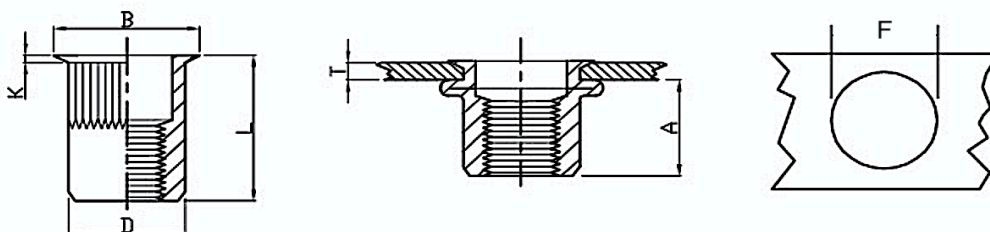
SERIE

MATERIALE

101

FPRZ

Acciaio Zincato bianco



Articolo	M	T Spessore	F +0.1 0	L	A	B	D +0.07 -0.2	K
FPRZ03-1	M3	0.5 - 1.5	4.8	9.0	5.5	5.4	4.65	0.4
FPRZ04-1	M4	0.5 - 2.0	6.5	10.5	6.5	7.0	6.35	0.5
FPRZ05-1	M5	0.5 - 2.5	7.25	12.0	7.5	7.85	7.15	0.5
FPRZ06-1	M6	1.0 - 3.0	9.6	15.0	9.2	10.3	9.45	0.6
FPRZ08-1	M8	1.0 - 3.5	10.6	16.0	10.5	11.3	10.45	0.6
FPRZ10-1	M10	1.0 - 4.0	12.8	20.0	12.8	13.8	12.65	0.65

Le dimensioni sono indicative, non vincolanti, espresse in mm. Non binding dimensions, expressed in mm.

COME ORDINARE:

CODICE SERIE + ARTICOLO + QUANTITA'

Esempio: 101 FPRZ03-1 1000

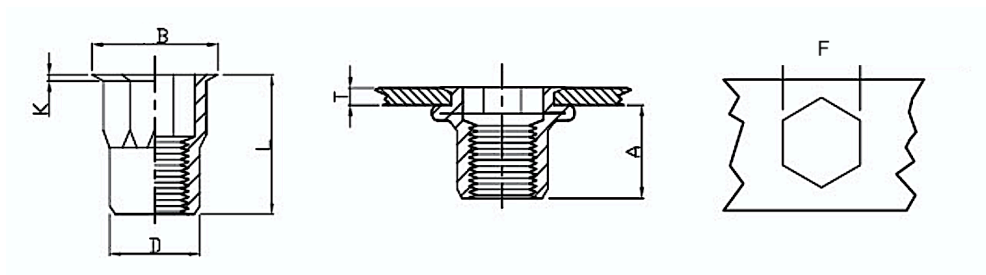
# INSERTI FILETTATI ACCIAIO ZINCATO

## TESTA RIDOTTA CORPO SEMI-ESAGONALE IN POLLICI

STEEL BLIND RIVET NUTS REDUCED HEAD-HALF HEXAGONAL SHANK IMPERIAL UK  
 ECROUS A SERTIR EN ACIER TÊTE RÈDUITE QUEUE EN PARTIE HEXAGONALE IMPÉRIAL UK  
 ВСТАВКИ С РЕЗЬБОЙ ИЗ СТАЛИ С СУЖЕННОЙ ГОЛОВКОЙ И НЕ ПОЛНОСТЬЮ ШЕСТИУГОЛЬНЫМ СТЕРЖНЕМ UK



Cod. SERIE	SERIE	MATERIALE
101	FPRSE	Acciaio Zincato bianco



Articolo	M	T Spessore	F +0.1 0	L	A	B	D +0.07 -0.2	K
FPRSE04-1	M4	0.5 - 2.0	6.4	10.5	6.5	7.25	6.25	0.5
FPRSE05-1	M5	0.5 - 2.5	7.2	12.0	7.5	8.1	7.05	0.5
FPRSE06-1	M6	1.0 - 3.0	9.6	15.0	9.2	10.5	9.45	0.6
FPRSE08-1	M8	1.0 - 3.5	10.6	16.5	10.5	11.5	10.45	0.65
FPRSE10-1	M10	1.0 - 4.0	12.8	21.0	11.3	14.0	12.65	0.7

Le dimensioni sono indicative, non vincolanti, espresse in mm. Non binding dimensions, expressed in mm.

### COME ORDINARE:

CODICE SERIE + ARTICOLO + QUANTITA' Esempio: 101 FPRSE05-1 1000

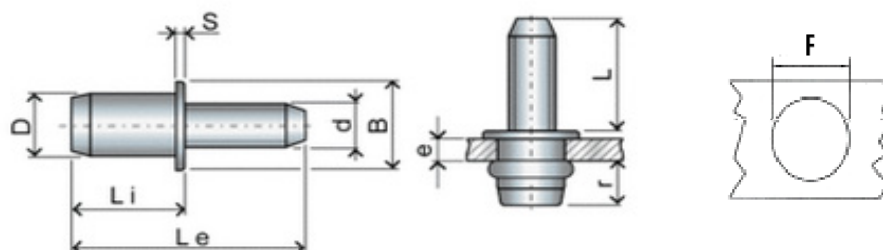
# INSERTI FILETTATI ACCIAIO ZINCATO

## INSERTO TONDO MASCHIO IN ACCIAIO ZINCATO

STEEL BLIND RIVET BOLTS  
 GOUJONS A SERTIR EN ACIER  
 СТАЛЬНЫЕ ВСТАВКИ МЕТЧИКИ



Cod. SERIE	SERIE	MATERIALE
104	CM	Acciaio Zincato bianco



Articolo	M	e Spessore serr. mm	F foratura	L	Li	Le	r max	D	B	S
CM05-1	M5	0.5 - 3.0	7.0	15.0	12.0	25.0	7.0	6.9	10.0	1.0
CM05-2	M5	0.5 - 3.0	7.0	20.0	12.0	30.0	7.0	6.9	10.0	1.0
CM05-3	M5	0.5 - 3.0	7.0	25.0	12.0	35.0	7.0	6.9	10.0	1.0
CM06-1	M6	0.5 - 3.0	9.0	15.0	14.5	27.0	9.0	8.9	13.0	1.5
CM06-2	M6	0.5 - 3.0	9.0	20.0	14.5	32.0	9.0	8.9	13.0	1.5
CM06-3	M6	0.5 - 3.0	9.0	25.0	14.5	37.0	9.0	8.9	13.0	1.5
CM08-1	M8	0.5 - 3.0	11.0	20.0	15.5	33.0	10.0	10.9	16.0	1.5
CM08-2	M8	0.5 - 3.0	11.0	25.0	15.5	38.0	10.0	10.9	16.0	1.5

Le dimensioni sono indicative, non vincolanti, espresse in mm. Non binding dimensions, expressed in mm.

### COME ORDINARE:

CODICE SERIE + ARTICOLO + QUANTITA' Esempio: 104 CM05-1 1000

# INSERTI FILETTATI ACCIAIO ZINCATO

## INSERTO ESAGONALE MASCHIO

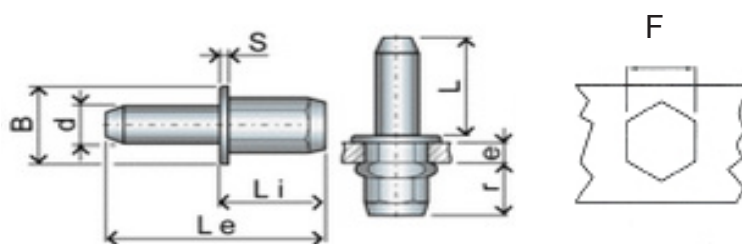
STEEL BLIND RIVET BOLTS- HEXAGONAL SHANK

GOUJONS A SERTIR EN ACIER QUEUE HEXAGONALE

СТАЛЬНЫЕ ВСТАВКИ МЕТЧИКИ С ШЕСТИУГОЛЬНЫМ СТЕРЖНЕМ



Cod. SERIE	SERIE	MATERIALE
104	EM	Acciaio Zincato bianco



Articolo	M	Spessore serr. mm	F foratura	L	Li	Le	r max	B	S
EM05-1	M5	0.5 - 3.0	7.0	15.0	12.0	25.0	6.0	10.0	1.0
EM05-2	M5	0.5 - 3.0	7.0	20.0	12.0	30.0	6.0	10.0	1.0
EM05-3	M5	0.5 - 3.0	7.0	25.0	12.0	35.0	6.0	10.0	1.0
EM06-1	M6	0.5 - 3.0	9.0	15.0	14.5	27.0	8.0	13.0	1.5
EM06-2	M6	0.5 - 3.0	9.0	20.0	14.5	32.0	8.0	13.0	1.5
EM06-3	M6	0.5 - 3.0	9.0	25.0	14.5	37.0	8.0	13.0	1.5
EM08-1	M8	0.5 - 3.0	11.0	20.0	15.5	33.0	9.0	16.0	1.5
EM08-2	M8	0.5 - 3.0	11.0	25.0	15.5	38.0	9.0	16.0	1.5

Le dimensioni sono indicative, non vincolanti, espresse in mm. Non binding dimensions, expressed in mm.

### COME ORDINARE:

CODICE SERIE + ARTICOLO + QUANTITA' Esempio: 104 EM05-1 1000

# INSERTI FILETTATI ACC INOX AISI 304 (A2)

## TESTA RIDOTTA CORPO ZIGRINATO

STAINLESS STEEL (A2) BLIND RIVET NUTS REDUCED HEAD BODY

ECROUS A SERTIR EN ACIER INOXYDABLE (A2) TÊTE RÈDUITE

ВСТАВКИ С РЕЗЬБОЙ С СУЖЕНОЙ ГОЛОВКОЙ ИЗ НЕРЖАВЕЮЩЕЙ СТАЛИ (A2)



Cod. SERIE

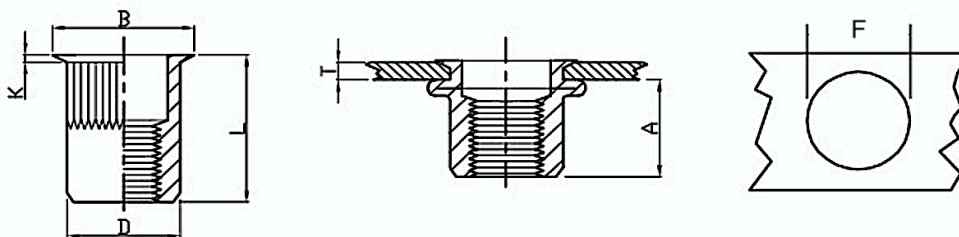
SERIE

MATERIALE

102

FTRZ

Acciaio Inox AISI 304 Cu



Articolo	M	T Spessore	F +0.1 0	L	A	B	D +0.07 -0.2	K
FTRZ03-1	M3	0.5 - 1.5	5.0	9.0	5.0	6.0	4.9	0.5
FTRZ03-2	M3	1.5 - 2.5	5.0	11.5	6.2	6.0	4.9	0.5
FTRZ04-1	M4	0.5 - 2.0	6.0	10.5	6.5	7.0	5.9	0.5
FTRZ04-2	M4	2.0 - 4.0	6.0	13.0	7.0	7.0	5.9	0.5
FTRZ05-1	M5	0.5 - 2.0	7.0	11.5	7.2	8.0	6.9	0.5
FTRZ05-2	M5	2.0 - 4.0	7.0	13.0	7.2	8.0	6.9	0.5
FTRZ06-1	M6	0.5 - 2.5	9.0	14.0	8.7	10.0	8.9	0.6
FTRZ06-2	M6	2.5 - 5.0	9.0	16.0	8.7	10.0	8.9	0.6
FTRZ08-1	M8	0.5 - 3.0	11.0	16.5	10.5	12.0	10.9	0.65
FTRZ08-2	M8	3.0 - 5.0	11.0	19.5	10.5	12.0	10.9	0.65
FTRZ10-1 (13H)	M10	1.0 - 3.5	13.0	17.7	10.7	14.0	12.9	0.7
FTRZ10-2 (13H)	M10	3.5 - 6.0	13.0	23.0	12.5	14.0	12.9	0.75
FTRZ12-1 (16H)	M12	1.0 - 4.0	16.0	24.2	16.2	17.6	15.9	0.8
FTRZ12-2 (16H)	M12	4.0 - 6.5	16.0	27.0	16.2	17.6	15.9	0.8

Le dimensioni sono indicative, non vincolanti, espresse in mm. Non binding dimensions, expressed in mm.

COME ORDINARE:

CODICE SERIE + ARTICOLO + QUANTITA'

Esempio: 102 FTRZ03-1 1000

# INSERTI FILETTATI ACC INOX AISI 304 (A2)

## TESTA SVASATA CORPO ZIGRINATO

STAINLESS STEEL (A2) BLIND RIVET NUTS COUNTERSUNK HEAD BODY

ECROUS A SERTIR EN ACIER INOXDABLE (A2) TÊTE FRAISÉE

ВСТАВКИ С РЕЗЬБОЙ С РАСКЛЕШЕННОЙ ГОЛОВКОЙ ИЗ НЕРЖАВЕЮЩЕЙ СТАЛИ (A2)



Cod. SERIE

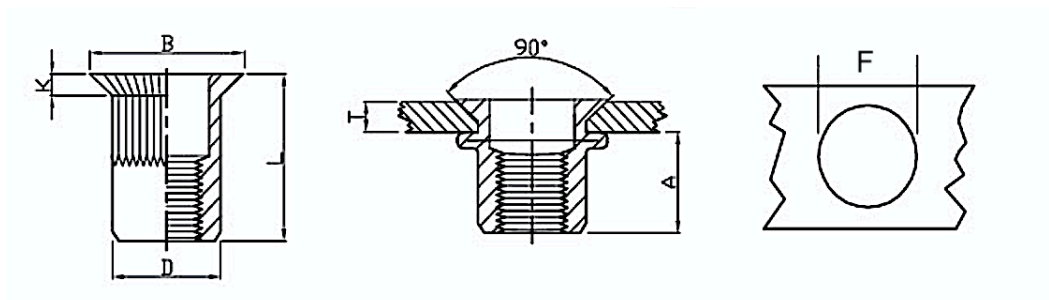
SERIE

MATERIALE

102

FTSZ

Acciaio Inox AISI 304 Cu



Articolo	M	T Spessore	F +0.1 0	L	A	B	D +0.07 -0.2	K
FTSZ04-1	M4	1.5 - 3.0	6.0	12.0	7.5	9.0	5.9	1.5
FTSZ05-1	M5	1.5 - 3.5	7.0	13.0	7.8	10.0	6.9	1.5
FTSZ06-1	M6	1.5 - 4.0	9.0	15.5	9.0	12.0	8.9	1.5
FTSZ08-1	M8	2.0 - 4.5	11.0	18.5	12.0	14.0	10.9	1.5
FTSZ10-1 (13H)	M10	2.0 - 5.0	13.0	21.0	13.0	16.0	12.9	1.5
FTSZ12-1 (16H)	M10	2.0 - 5.0	16.0	24.0	17.5	18.0	15.9	1.7

Le dimensioni sono indicative, non vincolanti, espresse in mm. Non binding dimensions, expressed in mm.

COME ORDINARE:

CODICE SERIE + ARTICOLO + QUANTITA'

Esempio: 102 FTSZ04-1 1000

# INSERTI FILETTATI ACC INOX AISI 304 (A2)

## TESTA CILINDRICA CORPO ZIGRINATO

STAINLESS STEEL (A2) BLIND RIVET NUTS CYLINDRICAL HEAD

ECROUS A SERTIR EN ACIER INOXYDABLE (A2) TÊTE CYLINDRIQUE

ВСТАВКИ С РЕЗЬБОЙ С ЦИЛИНДРИЧЕСКОЙ ГОЛОВКОЙ ИЗ НЕРЖАВЕЮЩЕЙ СТАЛИ (A2)



Cod. SERIE

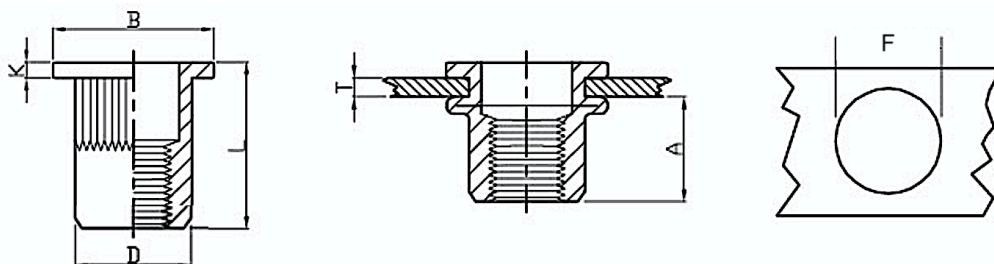
SERIE

MATERIALE

102

FTTZ

Acciaio Inox AISI 304 Cu



Articolo	M	T Spessore	F +0.1 0	L	A	B	D +0.07 -0.2	K
FTTZ03-1	M3	0.5 - 1.5	5.0	9.0	5.0	7.0	4.9	0.8
FTTZ04-1	M4	0.5 - 2.0	6.0	10.5	6.5	9.0	5.9	0.8
FTTZ04-2	M4	2.0 - 4.0	6.0	12.0	6.5	9.0	5.9	0.8
FTTZ05-1	M5	0.5 - 2.5	7.0	13.0	8.0	10.0	6.9	1.0
FTTZ05-2	M5	2.0 - 4.0	7.0	15.0	8.5	10.0	6.9	1.0
FTTZ06-1	M6	0.5 - 3.0	9.0	15.5	9.2	12.3	8.9	1.3
FTTZ06-2	M6	3.0 - 5.0	9.0	19.5	10.5	12.3	8.9	1.3
FTTZ08-1	M8	1.0 - 3.5	11.0	18.5	11.5	14.5	10.9	1.5
FTTZ08-2	M8	3.5 - 5.5	11.0	21.5	13.5	14.5	10.9	1.5
FTTZ10-1 (12H)	M10	1.0 - 4.0	12.0	21.0	13.5	17.0	11.9	1.7
FTTZ10-1 (13H)	M10	1.0 - 4.0	13.0	21.0	13.5	17.0	12.9	1.6
FTTZ10-2 (13H)	M10	4.0 - 6.0	13.0	24.0	13.5	17.0	12.9	1.7
FTTZ12-1 (16H)	M12	1.0 - 4.0	16.0	25.0	15.0	23.0	15.9	2.0
FTTZ12-2 (16H)	M12	4.0 - 6.0	16.0	28.0	16.0	23.0	15.9	2.0

Le dimensioni sono indicative, non vincolanti, espresse in mm. Non binding dimensions, expressed in mm.

COME ORDINARE:

CODICE SERIE + ARTICOLO + QUANTITA'

Esempio: 102 FTTZ03-1 1000

# INSERTI FILETTATI ACC INOX AISI 304 (A2)

## TESTA CILINDRICA RIDOTTA CORPO SEMI-ESAGONALE

STAINLESS STEEL (A2) BLIND RIVET NUTS REDUCED HEAD-HALF HEXAGONAL SHANK

ECROUS A SERTIR EN ACIER INOXYDABLE (A2) TÊTE RÉDUITE QUEUE EN PARTIE HEXAGONALE

ВСТАВКИ С РЕЗЬБОЙ С СУЖЕННОЙ ГОЛОВКОЙ И НЕ ПОЛНОСТЬЮ ШЕСТИУГОЛЬНЫМ СТЕРЖНЕМ ИЗ НЕРЖАВЕЮЩЕЙ СТАЛИ (A2)



Cod. SERIE

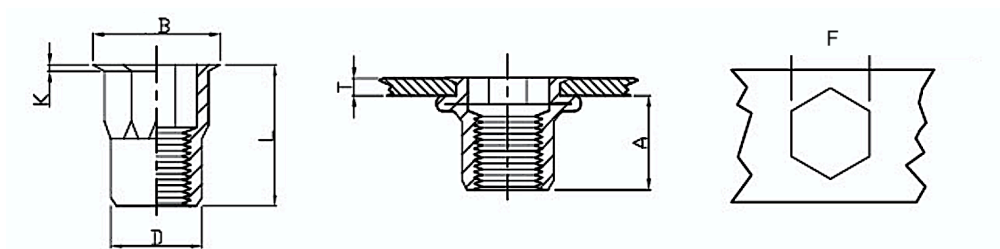
SERIE

MATERIALE

102

FTRSE

Acciaio Inox AISI 304 Cu



Articolo	M	T Spessore	F +0.1 0	L	A	B	D +0.07 -0.2	K
FTRSE03-1	M3	0.5 - 1.5	5.0	9.0	5.2	6.0	4.9	0.5
FTRSE03-2	M3	1.5 - 2.5	5.0	11.0	5.5	6.0	4.9	0.5
FTRSE04-1	M4	0.5 - 2.0	6.0	12.0	8.0	7.0	5.9	0.5
FTRSE04-2	M4	2.0 - 4.0	6.0	14.0	8.0	7.0	5.9	0.5
FTRSE05-1	M5	0.5 - 2.5	7.0	13.0	8.2	8.0	6.9	0.6
FTRSE05-2	M5	2.5 - 4.0	7.0	15.0	8.2	8.0	6.9	0.5
FTRSE06-1	M6	1.0 - 3.0	9.0	16.0	10.7	10.0	8.9	0.6
FTRSE06-2	M6	3.5 - 5.5	9.0	18.0	10.7	10.0	8.9	0.6
FTRSE08-1	M8	1.0 - 3.5	11.0	17.5	11.2	12.0	10.9	0.65
FTRSE08-2	M8	3.5 - 5.0	11.0	19.5	11.2	12.0	10.9	0.65
FTRSE10-1 (13H)	M10	1.0 - 4.0	13.0	21.0	13.5	14.5	12.9	0.75
FTRSE10-2 (13H)	M10	3.5 - 5.0	13.0	23.0	13.5	14.5	12.9	0.75
FTRSE12-1 (16H)	M12	1.0 - 4.0	16.0	24.0	14.8	17.5	15.9	0.8
FTRSE12-2 (16H)	M12	4.0 - 6.0	16.0	27.0	14.8	17.5	15.9	0.8

Le dimensioni sono indicative, non vincolanti, espresse in mm. Non binding dimensions, expressed in mm.

COME ORDINARE:

CODICE SERIE + ARTICOLO + QUANTITA'

Esempio: 102 FTRSE03-1 1000

# INSERTI FILETTATI ACC INOX AISI 304 (A2)

## TESTA CILINDRICA CORPO SEMI-ESAGONALE

STAINLESS STEEL (A2) BLIND RIVET NUTS CYLINDRICAL HEAD-HALF HEXAGONAL SHANK

ECROUS A SERTIR EN ACIER INOXYDABLE (A2) TÊTE CYLINDRIQUE QUEUE EN PARTIE HEXAGONALE

ВСТАВКИ С РЕЗЬБОЙ С ЦИЛИНДРИЧЕСКОЙ ГОЛОВКОЙ И НЕ ПОЛНОСТЬЮ ШЕСТИУГОЛЬНЫМ СТЕРЖНЕМ ИЗ НЕРЖАВЕЮЩЕЙ СТАЛИ (A2)



Cod. SERIE

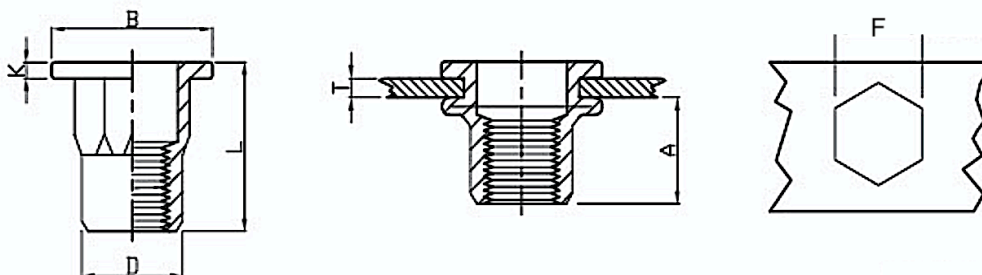
SERIE

MATERIALE

102

FTTSE

Acciaio Inox AISI 304 Cu



Articolo	M	T Spessore	F +0.1 0	L	A	B	D +0.07 -0.2	K
FTTSE03-1	M3	0.5-2.0	5.0	9	5.5	8.0	4.9	0.75
FTTSE04-1	M4	0.5 - 2.0	6.0	11.0	7.0	9.0	5.9	0.8
FTTSE04-2	M4	2.0 - 4.0	6.0	13.0	7.0	9.0	5.9	0.8
FTTSE05-1	M5	0.5 - 2.5	7.0	13.0	7.5	10.0	6.9	1.0
FTTSE05-2	M5	2.5 - 4.0	7.0	14.0	7.5	10.0	6.9	1.0
FTTSE06-1	M6	0.5 - 3.0	9.0	15.5	9.2	12.7(*13.0)	8.9	1.35
FTTSE06-2	M6	3.0 - 5.0	9.0	19.5	9.2	12.7(*13.0)	8.9	1.35
FTTSE08-1	M8	1.0 - 3.5	11.0	18.0	11.2	16.0	10.9	1.5
FTTSE08-2	M8	3.5 - 5.5	11.0	21.0	11.2	16.0	10.9	1.5
FTTSE10-1 (12H)	M10	1.0 - 3.5	12.0	19.0	11.0	17.0	11.9	1.6
FTTSE10-1 (13H)	M10	1.0 - 3.5	13.0	21.0	12.5	18.0	12.9	1.7
FTTSE10-2 (13H)	M10	3.5 - 6.0	13.0	21.0	12.8	18.0(*19.0)	14.9	1.7
FTTSE12-1 (16H)	M12	2.0 - 5.0	16.0	27.5	16.5	23.0	15.9	2.0

Le dimensioni sono indicative, non vincolanti, espresse in mm. Non binding dimensions, expressed in mm.

COME ORDINARE:

CODICE SERIE + ARTICOLO + QUANTITA'

Esempio: 102 FTTSE03-1 1000

# INSERTI FILETTATI ACC INOX AISI 304 (A2)

## TESTA RIDOTTA CORPO ZIGRINATO CIECO

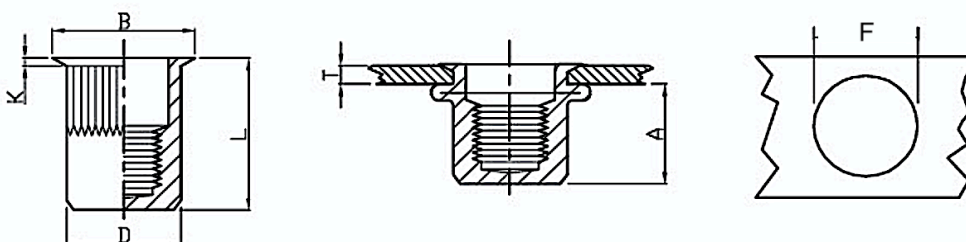
STAINLESS STEEL (A2) BLIND RIVET NUTS REDUCED HEAD - CLOSED END TYPE

ECROUS A SERTIR AVEUGLES EN ACIER INOXYDABLE (A2) TÊTE RÉDUITE

ГЛУХАЯ ВСТАВКИ С РЕЗЬБОЙ С СУЖЕННОЙ ГОЛОВКОЙ ИЗ НЕРЖАВЕЮЩЕЙ СТАЛИ (A2)



Cod. SERIE	SERIE	MATERIALE
102	FTRCZ	Acciaio Inox AISI 304 Cu



Articolo	M	T Spessore	F +0.1 0	L	A	B	D +0.07 -0.2	K
FTRCZ03-1	M3	0.5 - 1.5	5.0	12.0	10.0	6.0	4.9	0.5
FTRCZ03-2	M3	1.5 - 4.0	5.0	14.0	10.0	6.0	4.9	0.5
FTRCZ04-1	M4	0.5 - 2.0	6.0	15.0	11.2	7.0	5.9	0.5
FTRCZ04-2	M4	2.0 - 4.0	6.0	16.5	11.2	7.0	5.9	0.5
FTRCZ05-1	M5	0.5 - 2.0	7.0	16.5	11.5	8.0	6.9	0.5
FTRCZ05-2	M5	2.0 - 4.0	7.0	18.0	11.5	8.0	6.9	0.5
FTRCZ06-1	M6	0.5 - 2.5	9.0	20.5	15.0	10.0	8.9	0.6
FTRCZ06-2	M6	2.5 - 4.5	9.0	22.0	15.0	10.0	8.9	0.6
FTRCZ08-1	M8	0.5 - 3.0	11.0	23.0	17.5	12.0	10.9	0.65
FTRCZ08-2	M8	3.0 - 5.0	11.0	24.5	17.5	12.0	10.9	0.70
FTRCZ010-1(13H)	M10	1.0 - 3.5	13.0	24.5	18.0	14.0	12.9	0.70
FTRCZ010-2(13H)	M10	3.5 - 5.5	13.0	26.0	18.0	14.0	12.9	0.80

Le dimensioni sono indicative, non vincolanti, espresse in mm. Non binding dimensions, expressed in mm.

### COME ORDINARE:

CODICE SERIE + ARTICOLO + QUANTITA' Esempio: 102 FTRCZ03-1 1000

# INSERTI FILETTATI ACC INOX AISI 304 (A2)

## TESTA CILINDRICA CORPO ZIGRINATO CIECO

STAINLESS STEEL (A2) BLIND RIVET NUTS CYLINDRICAL HEAD-CLOSED END BODY

ECROUS A SERTIR AVEUGLES EN ACIER INOXYDABLE (A2) TÊTE CYLINDRIQUE

ГЛУХИЕ ВСТАВКИ С РЕЗЬБОЙ С ЦИЛИНДРИЧЕСКОЙ ГОЛОВКОЙ ИЗ НЕРЖАВЕЮЩЕЙ СТАЛИ (A2)



Cod. SERIE

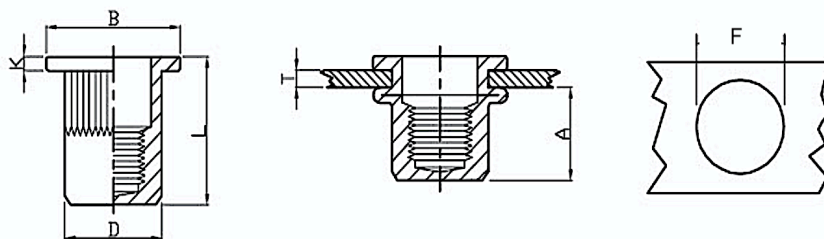
SERIE

MATERIALE

102

FTTCZ

Acciaio Inox AISI 304 Cu



Articolo	M	T Spessore	F +0.1 0	L	A	B	D +0.07 -0.2	K
FTTCZ03-1	M3	0.5 - 1.5	6.0	13.0	8.0	8.0	5.9	0.8
FTTCZ04-1	M4	0.5 - 2.0	6.0	16.0	11.8	9.0	5.9	0.8
FTTCZ04-2	M4	2.0 - 4.0	6.0	18.0	11.8	9.0	5.9	0.8
FTTCZ05-1	M5	0.5 - 2.5	7.0	17.0	12.0	10.0	6.9	1.0
FTTCZ05-2	M5	2.0 - 4.0	7.0	19.0	12.0	10.0	6.9	1.0
FTTCZ06-1	M6	0.5 - 3.0	9.0	19.2	12.7	12.3	8.9	1.3
FTTCZ06-2	M6	3.0 - 5.0	9.0	21.0	12.7	12.3	8.9	1.3
FTTCZ08-1	M8	1.0 - 3.5	11.0	21.5	14.2	15.0	10.9	1.5
FTTCZ08-2	M8	3.5 - 5.5	11.0	24.0	14.8	14.5	10.9	1.5
FTTCZ10-1 (13H)	M10	1.0 - 4.0	13.0	27.0	18.0	17.0	12.9	1.6
FTTCZ10-2 (13H)	M10	4.0 - 6.0	13.0	30.0	19.2	17.0	12.9	1.7
FTTCZ12-1 (16H)	M12	1.0 - 4.0	16.0	30.0	29.5	23.0	15.9	1.8
FTTCZ12-2 (16H)	M12	4.0 - 6.0	16.0	33.0	29.5	23.0	15.9	2.0

Le dimensioni sono indicative, non vincolanti, espresse in mm. Non binding dimensions, expressed in mm.

### COME ORDINARE:

CODICE SERIE + ARTICOLO + QUANTITA' Esempio: 102 FTTCZ04-1 1000

# INSERTI FILETTATI ACC INOX AISI 304 (A2)

## TESTA ESAGONALE RIDOTTA CORPO SEMI-ESAGONALE CIECO

STAINLESS STEEL (A2) BLIND RIVET NUTS REDUCED HEAD-HALF HEXAGONAL SHANK - CLOSED END TYPE

ECROUS A SERTIR EN ACIER INOXYDABLE (A2) TÊTE RÈDUITE QUEUE EN PARTIE HEXAGONALE

ГЛУХАЯ ВСТАВКИ С РЕЗЬБОЙ С СУЖЕННОЙ ГОПОВКОЙ И НЕ ПОЛНОСТЬЮ ШЕСТИУГОЛЬНЫМ СТЕРЖНЕМ ИЗ НЕРЖАВЕЮЩЕЙ СТАЛИ (A2)



Cod. SERIE

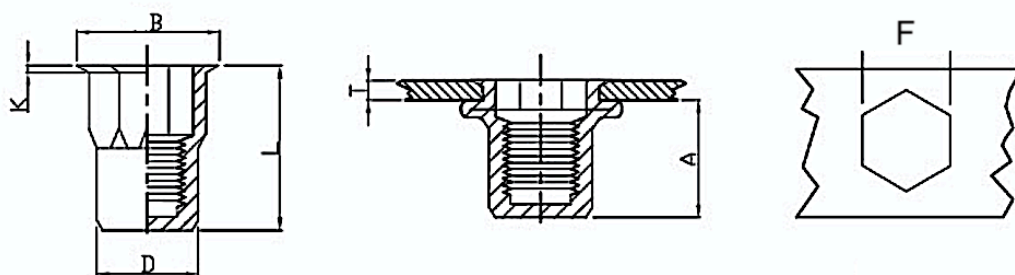
SERIE

MATERIALE

102

FTRSEC

Acciaio Inox AISI 304 Cu



Articolo	M	T Spessore	F +0.1 0	L	A	B	D +0.07 -0.2	K
FTRSEC03-1	M3	0.5 - 1.5	5.0	13.0	8.5	6.0	4.9	0.5
FTRSEC03-2	M3	1.5 - 2.5	5.0	15.0	8.5	6.0	4.9	0.5
FTRSEC04-1	M4	0.5 - 2.0	6.0	15.5	11.5	7.0	5.9	0.5
FTRSEC04-2	M4	2.0 - 4.0	6.0	17.5	11.5	7.0	5.9	0.5
FTRSEC05-1	M5	0.5 - 2.5	7.0	18.0	13.5	8.0	6.9	0.5
FTRSEC05-2	M5	2.0 - 4.0	7.0	20.0	13.5	8.0	6.9	0.5
FTRSEC06-1	M6	0.5 - 3.5	9.0	21.5	15.8	10.0	8.9	0.6
FTRSEC06-2	M6	3.5 - 5.0	9.0	23.0	15.8	10.0	8.9	0.6
FTRSEC08-1	M8	1.0 - 3.5	11.0	24.0	18.2	12.0	10.9	0.65
FTRSEC08-2	M8	3.5 - 5.0	11.0	26.0	18.2	12.0	10.9	0.65
FTRSEC10-1 H13	M10	1.0 - 4.0	13.0	30.5	23.2	14.5	12.9	0.75
FTRSEC10-2 H13	M10	3.5 - 5.0	13.0	33.0	23.2	14.5	12.9	0.75

Le dimensioni sono indicative, non vincolanti, espresse in mm. Non binding dimensions, expressed in mm.

COME ORDINARE:

CODICE SERIE + ARTICOLO + QUANTITA' Esempio: 102 FTRSEC03-1 1000

# INSERTI FILETTATI ACC INOX AISI 304 (A2)

## TESTA CILINDRICA CORPO SEMI-ESAGONALE CIECO

STAINLESS STEEL (A2) BLIND RIVET NUTS CYLINDRICAL HEAD-HALF HEXAGONAL SHANK - CLOSED END TYPE  
 ECROUS A SERTIR EN ACIER INOXYDABLE (A2) TÊTE CYLINDRIQUE QUEUE EN PARTIE HEXAGONALE  
 ГЛУХАЯ ВСТАВКИ С РЕЗЬБОЙ С ЦИЛИНДРИЧЕСКОЙ ГОПОВКОЙ И НЕ ПОЛНОСТЬЮ ШЕСТИУГОЛЬНЫМ СТЕРЖНЕМ ИЗ НЕРЖАВЕЮЩЕЙ СТАЛИ (A2)



Cod. SERIE

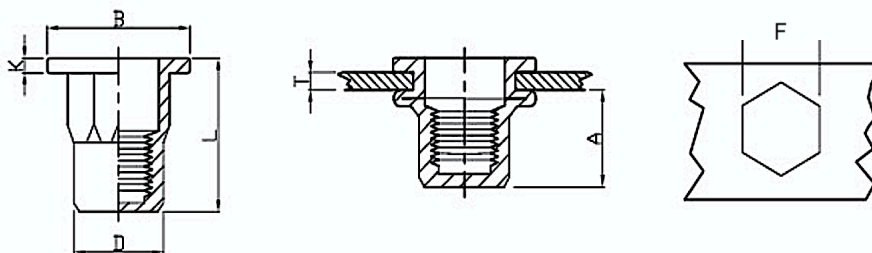
SERIE

MATERIALE

102

FTTSEC

Acciaio Inox AISI 304 Cu



Articolo	M	T Spessore	F +0.1 0	L	A	B	D +0.07 -0.2	K
FTTSEC04-1	M4	0.5 - 2.0	6.0	16.0	11.5	9.0	5.9	1.0
FTTSEC05-1	M5	0.5 - 2.5	7.0	18.5	13.5	10.0	6.9	1.0
FTTSEC06-1	M6	0.5 - 3.0	9.0	23.0	17.0	12.7	8.9	1.5
FTTSEC08-1	M8	1.0 - 3.5	11.0	25.0	18.2	16.0	10.9	1.5
FTTSEC10-1 H13	M10	1.0 - 4.0	13.0	33.0	25.0	18.0	12.9	1.7

Le dimensioni sono indicative, non vincolanti, espresse in mm. Non binding dimensions, expressed in mm.

COME ORDINARE:

CODICE SERIE + ARTICOLO + QUANTITA'

Esempio: 102 FTTSEC04-1 1000

# INSERTI FILETTATI ACC INOX AISI 316 (A4)

## TESTA RIDOTTA CORPO ZIGRINATO

STAINLESS STEEL AISI 316 BLIND RIVET NUTS REDUCED HEAD BODY

ECROUS A SERTIR EN ACIER INOXYDABLE AISI 316 TÊTE RÉDUITE

ВСТАВКИ С РЕЗЬБОЙ С СУЖЕНОЙ ГОЛОВКОЙ ИЗ НЕРЖАВЕЮЩЕЙ СТАЛИ AISI 316



Cod. SERIE

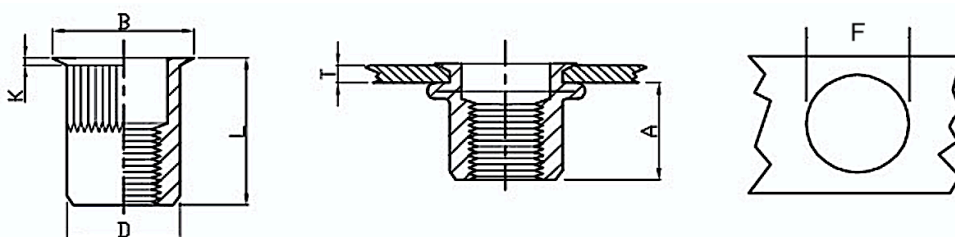
SERIE

MATERIALE

102

FTRZ

Acciaio Inox AISI 316 Cu



Articolo	M	T Spessore	F +0.1 0	L	A	B	D +0.07 -0.2	K
FTRZ03-1	M3	0.5 - 1.5	5.0	9.0	5.0	6.0	4.9	0.5
FTRZ03-2	M3	1.5 - 2.5	5.0	11.5	6.2	6.0	4.9	0.5
FTRZ04-1	M4	0.5 - 2.0	6.0	10.5	6.5	7.0	5.9	0.5
FTRZ04-2	M4	2.0 - 4.0	6.0	13.0	7.0	7.0	5.9	0.5
FTRZ05-1	M5	0.5 - 2.0	7.0	11.5	7.2	8.0	6.9	0.5
FTRZ05-2	M5	2.0 - 4.0	7.0	13.0	7.2	8.0	6.9	0.5
FTRZ06-1	M6	0.5 - 2.5	9.0	14.0	8.7	10.0	8.9	0.6
FTRZ06-2	M6	2.5 - 5.0	9.0	16.0	8.7	10.0	8.9	0.6
FTRZ08-1	M8	0.5 - 3.0	11.0	16.5	10.5	12.0	10.9	0.65
FTRZ08-2	M8	3.0 - 5.0	11.0	19.5	10.5	12.0	10.9	0.65
FTRZ10-1 (13H)	M10	1.0 - 3.5	13.0	17.7	10.7	14.0	12.9	0.7
FTRZ10-2 (13H)	M10	3.5 - 6.0	13.0	23.0	12.5	14.0	12.9	0.75
FTRZ12-1 (16H)	M12	1.0 - 4.0	16.0	24.2	16.2	17.6	15.9	0.8
FTRZ12-2 (16H)	M12	4.0 - 6.5	16.0	27.0	16.2	17.6	15.9	0.8

Le dimensioni sono indicative, non vincolanti, espresse in mm. Non binding dimensions, expressed in mm.

COME ORDINARE:

CODICE SERIE + ARTICOLO + QUANTITA' Esempio: 102 FTRZ04-1 1000

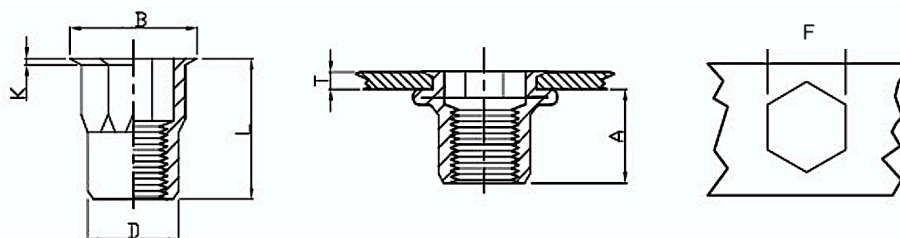
# INSERTI FILETTATI ACC INOX AISI 316 (A4)

## TESTA CILINDRICA RIDOTTA CORPO SEMI-ESAGONALE

STAINLESS STEEL AISI 316 BLIND RIVET NUTS REDUCED HEAD-HALF HEXAGONAL SHANK  
 ECROUS A SERTIR EN ACIER INOXYDABLE AISI 316 TÊTE RÉDUITE QUEUE EN PARTIE HEXAGONALE  
 ВСТАВКИ С РЕЗЬБОЙ С СУЖЕННОЙ ГОЛОВКОЙ И НЕ ПОЛНОСТЬЮ ШЕСТИУГОЛЬНЫМ СТЕРЖНЕМ ИЗ НЕРЖАВЕЮЩЕЙ СТАЛИ AISI 316



Cod. SERIE	SERIE	MATERIALE
102	FTRSE	Acciaio Inox AISI 316 Cu



Articolo	M	T Spessore	F +0.1 0	L	A	B	D +0.07 -0.2	K
FTRSE03-1	M3	0.5 - 1.5	5.0	9.0	5.2	6.0	4.9	0.5
FTRSE03-2	M3	1.5 - 2.5	5.0	11.0	5.5	6.0	4.9	0.5
FTRSE04-1	M4	0.5 - 2.0	6.0	12.0	8.0	7.0	5.9	0.5
FTRSE04-2	M4	2.0 - 4.0	6.0	14.0	8.0	7.0	5.9	0.5
FTRSE05-1	M5	0.5 - 2.5	7.0	13.0	8.2	8.0	6.9	0.6
FTRSE05-2	M5	2.5 - 4.0	7.0	15.0	8.2	8.0	6.9	0.5
FTRSE06-1	M6	1.0 - 3.0	9.0	16.0	10.7	10.0	8.9	0.6
FTRSE06-2	M6	3.5 - 5.5	9.0	18.0	10.7	10.0	8.9	0.6
FTRSE08-1	M8	1.0 - 3.5	11.0	17.5	11.2	12.0	10.9	0.65
FTRSE08-2	M8	3.5 - 5.0	11.0	19.5	11.2	12.0	10.9	0.65
FTRSE10-1 (13H)	M10	1.0 - 4.0	13.0	21.0	13.5	14.5	12.9	0.75
FTRSE10-2 (13H)	M10	3.5 - 5.0	13.0	23.0	13.5	14.5	12.9	0.75
FTRSE12-1 (16H)	M12	1.0 - 4.0	16.0	24.0	14.8	17.5	15.9	0.8
FTRSE12-2 (16H)	M12	4.0 - 6.0	16.0	27.0	14.8	17.5	15.9	0.8

Le dimensioni sono indicative, non vincolanti, espresse in mm. Non binding dimensions, expressed in mm.

### COME ORDINARE:

CODICE SERIE + ARTICOLO + QUANTITA' Esempio: 102 FTRSE04-1 1000

# INSERTI FILETTATI ACC INOX AISI 316 (A4)

## TESTA CILINDRICA CORPO SEMI-ESAGONALE CIECO

STAINLESS STEEL (A4) BLIND RIVET NUTS CYLINDRICAL HEAD-HALF HEXAGONAL SHANK - CLOSED END TYPE  
 ECROUS A SERTIR EN ACIER INOXYDABLE (A4) TÊTE CYLINDRIQUE QUEUE EN PARTIE HEXAGONALE  
 ГЛУХАЯ ВСТАВКИ С РЕЗЬБОЙ С ЦИЛИНДРИЧЕСКОЙ ГОЛОВКОЙ И НЕ ПОЛНОСТЬЮ ШЕСТИУГОЛЬНЫМ СТЕРЖНЕМ ИЗ НЕРЖАВЕЮЩЕЙ СТАЛИ (A4)



Cod. SERIE

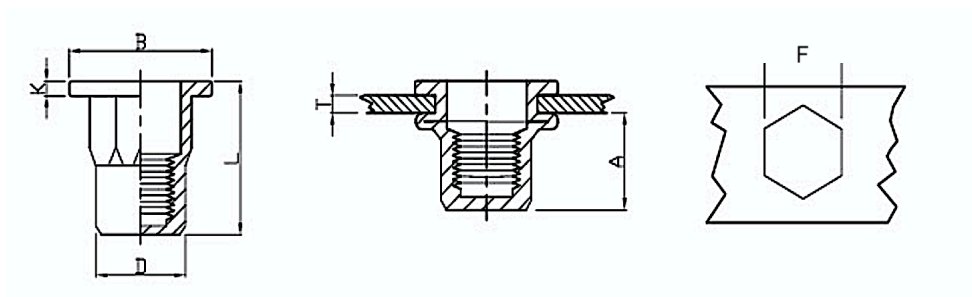
SERIE

MATERIALE

102

FTTSEC

Acciaio Inox AISI 316 Cu



Articolo	M	T Spessore	F +0.1 0	L	A	B	D +0.07 -0.2	K
FTTSEC04-1	M4	0.5 - 2.0	6.0	16.0	11.5	9.0	5.9	0.8
FTTSEC05-1	M5	0.5 - 2.5	7.0	18.5	13.5	10.0	6.9	1.0
FTTSEC06-1	M6	0.5 - 3.0	9.0	23.0	17.0	12.7	8.9	1.3
FTTSEC08-1	M8	1.0 - 3.5	11.0	25.0	18.2	16.0	10.9	1.5
FTTSEC10-1 H13	M10	1.0 - 4.0	13.0	33.0	25.0	18.0	12.9	1.7

Le dimensioni sono indicative, non vincolanti, espresse in mm. Non binding dimensions, expressed in mm.

### COME ORDINARE:

CODICE SERIE + ARTICOLO + QUANTITA' Esempio: 102 FTTSEC04-1 1000

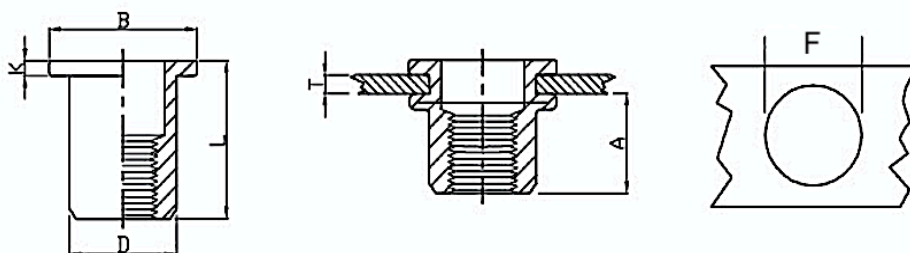
# INSERTI FILETTATI IN ALLUMINIO

## TESTA CILINDRICA CORPO LISCIO

ALUMINIUM BLIND RIVET NUTS CYLINDRICAL HEAD BODY  
 ECROUS A SERTIR EN ALUMINIUM TÊTE CYLINDRIQUE  
 ВСТАВКИ С РЕЗЬБОЙ С ЦИЛИНДРИЧЕСКОЙ ГОЛОВКОЙ ИЗ АЛЮМИНИЯ



Cod. SERIE	SERIE	MATERIALE
103	FTTL	Alluminio



Articolo	M	T Spessore	F +0.1 0	L	A	B	D +0.07 -0.2	K
FTTL04-1	M4	0.5 - 2.0	6.0	10.5	6.0	8.8	5.9	0.8
FTTL05-1	M5	0.5 - 2.5	7.0	13.0	7.5	10.0	6.9	1.0
FTTL06-1	M6	0.5 - 2.5	9.0	15.0	9.2	12.3	8.9	1.5
FTTL08-1	M8	1.0 - 3.0	11.0	16.5	10.2	14.3	10.9	1.5
FTTL10-1 (13H)	M10	1.0 - 4.0	13.0	19.0	11.5	16.3	12.9	1.6

Le dimensioni sono indicative, non vincolanti, espresse in mm. Non binding dimensions, expressed in mm.

### COME ORDINARE:

CODICE SERIE + ARTICOLO + QUANTITA' Esempio: 103 FTTL04-1 1000

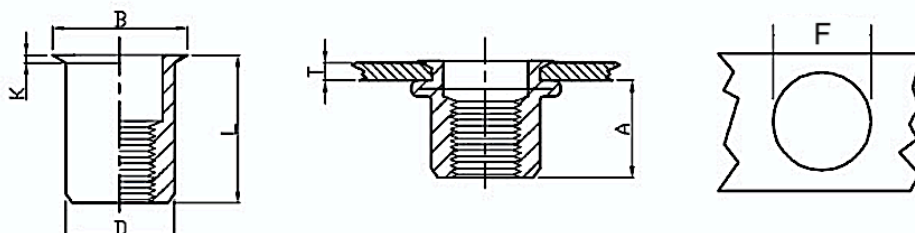
# INSERTI FILETTATI IN ALLUMINIO

## TESTA RIDOTTA CORPO LISCIO

ALUMINIUM BLIN DRIVET NUTS REDUCED HEAD BODY  
 ECROUS A SERTIR EN ALUMINIUM TÊTE RÈDUITE  
 ВСТАВКИ С РЕЗЬБОЙ С СУЖЕННОЙ ГОЛОВКОЙ ИЗ АЛЮМИНИЯ



Cod. SERIE	SERIE	MATERIALE
103	FTRL	Alluminio



Articolo	M	T Spessore	F +0.1 0	L	A	B	D +0.07 -0.2	K
FTRL04-1	M4	0.5 - 2.0	6.0	10.5	6.0	7.0	5.9	0.5
FTRL05-1	M5	0.5 - 2.0	7.0	11.5	7.5	8.0	6.9	0.5
FTRL06-1	M6	0.5 - 2.5	9.0	14.0	9.2	10.0	8.9	0.6
FTRL08-1	M8	0.5 - 2.5	11.0	15.5	10.2	12.0	10.9	0.65
FTRL10-1(13H)	M10	1.0 - 3.0	13.0	17.7	11.5	14.1	12.9	0.7

Le dimensioni sono indicative, non vincolanti, espresse in mm. Non binding dimensions, expressed in mm.

### COME ORDINARE:

CODICE SERIE + ARTICOLO + QUANTITA'      Esempio: 103 FTRL04-1 1000

# INSERTI FILETTATI IN ALLUMINIO

## TESTA CILINDRICA CORPO ZIGRINATO

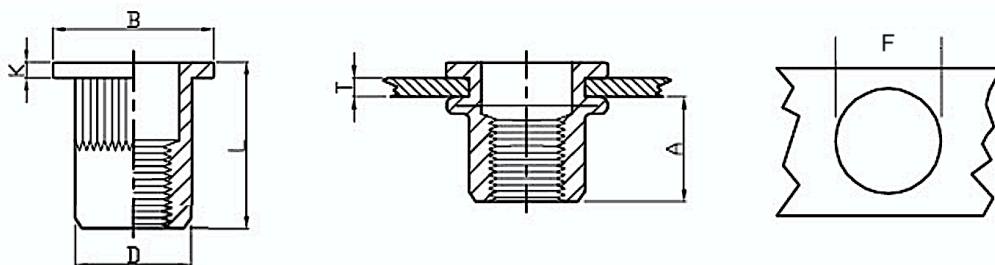
ALUMINIUM BLIND RIVET NUTS CYLINDRICAL HEAD

ECROUS A SERTIR EN ALUMINIUM TÊTE CYLINDRIQUE

ВСТАВКИ С РЕЗЬБОЙ С ЦИЛИНДРИЧЕСКОЙ ГОЛОВКОЙ ИЗ АЛЮМИНИЯ



Cod. SERIE	SERIE	MATERIALE
103	FTTZ	Alluminio



Articolo	M	T Spessore	F +0.1 0	L	A	B	D +0.07 -0.2	K
FTTZ03-1	M3	0.5 - 1.5	5.0	9.0	5.0	8.0	4.9	0.8
FTTZ04-1	M4	0.5 - 2.0	6.0	10.5	6.0	8.8	5.9	0.8
FTTZ05-1	M5	0.5 - 2.5	7.0	13.0	7.5	10.0	6.9	1.0
FTTZ06-1	M6	0.5 - 2.5	9.0	15.0	9.2	12.3	8.9	1.5
FTTZ08-1	M8	1.0 - 3.0	11.0	16.5	10.2	14.3	10.9	1.5
FTTZ10-1 (13H)	M10	1.0 - 4.0	13.0	19.0	11.5	16.3	12.9	1.6

Le dimensioni sono indicative, non vincolanti, espresse in mm. Non binding dimensions, expressed in mm.

### COME ORDINARE:

CODICE SERIE + ARTICOLO + QUANTITA' Esempio: 103 FTTZ04-1 1000

# INSERTI FILETTATI IN ALLUMINIO

## TESTA RIDOTTA CORPO ZIGRINATO

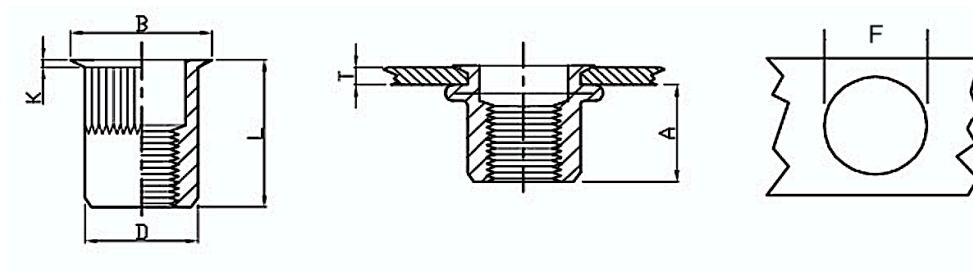
ALUMINIUM BLIND RIVET NUTS REDUCED HEAD BODY

ECROUS A SERTIR EN ALUMINIUM TÊTE RÉDUITE

ВСТАВКИ С РЕЗЬБОЙ С СУЖЕНОЙ ГОЛОВКОЙ ИЗ АЛЮМИНИЯ



Cod. SERIE	SERIE	MATERIALE
103	FTRZ	Alluminio



Articolo	M	T Spessore	F +0.1 0	L	A	B	D +0.07 -0.2	K
FTRZ03-1	M3	0.5 - 1.5	5.0	9.0	5.0	6.0	4.9	0.5
FTRZ04-1	M4	0.5 - 2.0	6.0	10.5	6.0	7.0	5.9	0.5
FTRZ05-1	M5	0.5 - 2.0	7.0	11.5	7.5	8.0	6.9	0.5
FTRZ06-1	M6	0.5 - 2.5	9.0	14.0	9.2	10.0	8.9	0.6
FTRZ08-1	M8	0.5 - 2.5	11.0	15.5	10.2	12.0	10.9	0.65
FTRZ10-1 (13H)	M10	1.0 - 3.0	13.0	17.7	11.5	14.1	12.9	0.7

Le dimensioni sono indicative, non vincolanti, espresse in mm. Non binding dimensions, expressed in mm.

### COME ORDINARE:

CODICE SERIE + ARTICOLO + QUANTITA' Esempio: 103 FTRZ04-1 1000

# ATTREZZATURE

## TIRAINSERTI OLEOPNEUMATICA



### RL-312

<b>PESO / WEIGHT</b>	<b>TEMPO CICLO / CYCLE TIME</b>	<b>CORSA / STROKE</b>	<b>PRESSIONE / PRESSURE</b>	<b>POTENZA / POWER</b>
2.46 Kg	2.5 sec	7.0 mm	5.0-7.0 Bar	19000N
<b>MODELLO / MODEL</b>	<b>INSERTI SUPPORTATI / SUPPORTED RIVET NUTS</b>		<b>CODICE / CODE</b>	
RL-312	da M 3.0 mm a M 12.0 mm [ TUTTI I MATERIALI / ALL MATERIALS ]		B01-RL-312	

# ATTREZZATURE

## TIRAINSERTI OLEOPNEUMATICA



### RL 310

<b>PESO / WEIGHT</b>	<b>TEMPO CICLO / CYCLE TIME</b>	<b>CORSA / STROKE</b>	<b>PRESSIONE / PRESSURE</b>	<b>POTENZA / POWER</b>
2.21 Kg	2.5 sec	7.0 mm	5.0-7.0 Bar	19000N
<b>MODELLO / MODEL</b>	<b>INSERTI SUPPORTATI / SUPPORTED RIVET NUTS</b>		<b>CODICE / CODE</b>	
RL 310	da M 3.0 mm a M 10.0 mm [ TUTTI I MATERIALI / ALL MATERIALS ]		B01-RL310	